



18 Channel Reach Channel Road, Liverpool, Merseyside L23 6TA

£115,000

An IDEAL INVESTMENT OPPORTUNITY to acquire a 2 bedroom apartment with partial SEA VIEWS on the 2nd floor, in a highly desirable location in Blundellsands. The apartment has warm air heating and would benefit from modernisation. It comprises: entrance hall, lounge, kitchen, 2 double bedrooms, bathroom. There is also a Garage and well kept communal gardens. Offered with no chain.



Hallway

Entrance hallway with telephone entry system and large storage cupboard

Lounge

20'0" x 12'9" (6.1 x 3.9)

Windows to front and side with far reaching views over the rooftops and out to sea. Electric wall heater

Kitchen

10'2" x 8'10" (3.1 x 2.7)

Window to side, stainless steel double drainer sink unit, electric cooker point, range of wall and base units together with original storage cupboards

Bathroom

8'10" x 5'10" (2.7 x 1.8)

Frosted window to side, paneled bath with shower over, low level WC and wall hung wash hand basin

Bedroom 1

15'8" x 9'10" (4.8 x 3)

Window to side with far reaching views over the rooftops and out to sea, built in wardrobes and electric wall heater

Bedroom 2

11'9" x 9'10" (3.6 x 3)

Window to front, built in wardrobes and electric wall heater

Garage

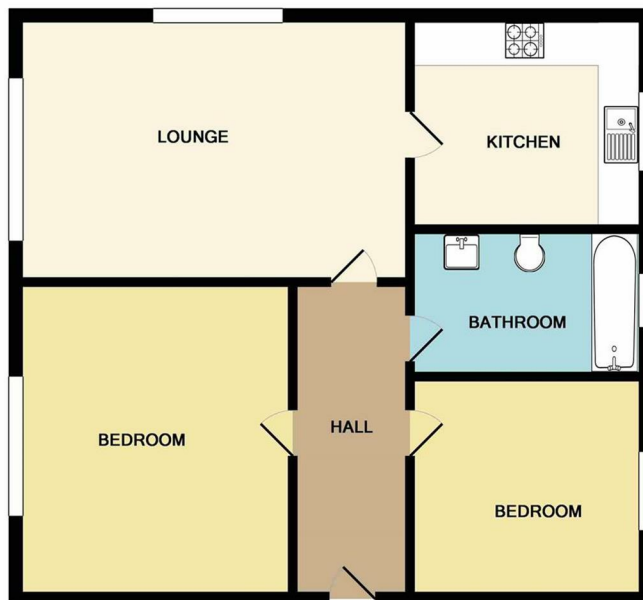
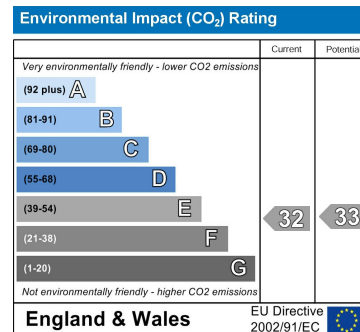
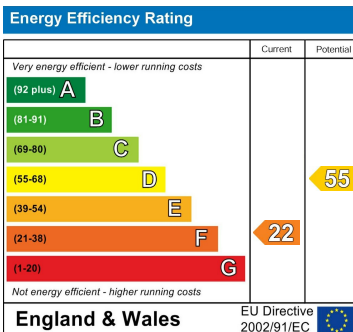
(number 12) Single garage with up and over door

Outside

There are communal gardens

Lease Details

We are advised that the lease is the remainder of 999 years from Jan 1966 and the management fees are £225 per quarter



Whilst every attempt has been made to ensure the accuracy of the floor plan contained here, measurements of doors, windows, rooms and any other items are approximate and no responsibility is taken for any error, omission, or mis-statement. This plan is for illustrative purposes only and should be used as such by any prospective purchaser. The services, systems and appliances shown have not been tested and no guarantee as to their operability or efficiency can be given
Made with Metropix ©2018

