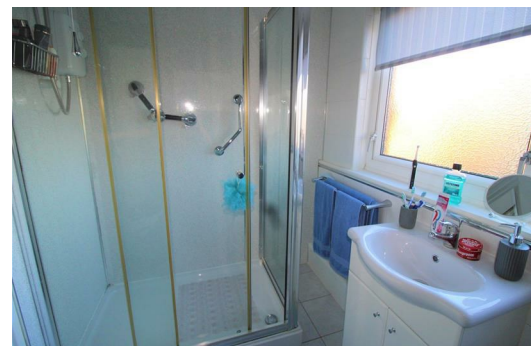




204 Bowland Drive, Liverpool, Merseyside L21 0JL

Offers In Excess Of £70,000

BERKELEY SHAW are delighted to offer for sale this well presented three bedroom home. This would make an ideal first time buy or BUY TO LET investment. The property briefly comprises entrance hallway, lounge with feature fireplace, kitchen dining room, utility room, ground floor WC, three good sized bedrooms and modern shower room. There is an enclosed low maintenance garden to rear, and small garden to front.



Energy Efficiency Rating		
	Current	Potential
Very energy efficient - lower running costs		
(92 plus) A		
(81-91) B		
(69-80) C		
(55-68) D		
(39-54) E		
(21-38) F		
(1-20) G		
Not energy efficient - higher running costs		
England & Wales		EU Directive 2002/91/EC

Environmental Impact (CO ₂) Rating		
	Current	Potential
Very environmentally friendly - lower CO2 emissions		
(92 plus) A		
(81-91) B		
(69-80) C		
(55-68) D		
(39-54) E		
(21-38) F		
(1-20) G		
Not environmentally friendly - higher CO2 emissions		
England & Wales		EU Directive 2002/91/EC

