



## 73 Mark Road, Liverpool, Merseyside L38 0BQ

Asking Price £320,000

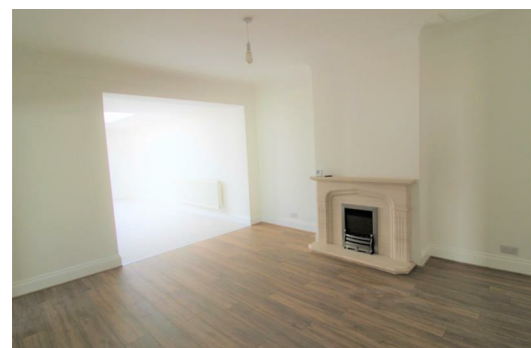
An AMAZING OPPORTUNITY to buy a TRUE BUNGALOW in Hightown!!

BERKELEY SHAW are delighted to offer for sale this recently renovated 3 BEDROOM semi-detached bungalow which also presents buyers with the opportunity to finish it to their taste!

This lovely property offers light, airy and open plan accommodation situated on a large plot with an opportunity to select carpets and landscaping to your taste.

The property comprises of entrance hall, lounge and open plan kitchen/diner. There are three double bedrooms and a family shower room. There is a large rear garden that could be laid to lawn with attractive Indian stone patio area. To the front there will be a driveway providing off road parking for several cars with access to the garage.

An internal inspection is highly recommended and viewings to be conducted exclusively with Berkeley Shaw.





Hallway

9'2" x 6'6" (2.8 x 2)

Composite door to front, radiator, storage cupboard, cupboard housing meters, tiled floor

Lounge

Solid limestone fireplace with electric fire, laminate flooring

Open Plan Kitchen/Diner

36'1" x 21'3" (at its widest point) (11 x 6.5 (at its widest point))

Fitted with a range of wall and base units with complimentary work surfaces incorporating a composite two bowl sink with mixer tap, NEFF double oven and hob with extractor fan. island with storage cupboards underneath, larder, cupboard housing combi boiler, space for washing machine, radiator, tiled floor, pyramid sky light, two sets of patio doors leading to rear garden.

Master Bedroom

15'5" x 13'1" (4.7 x 4)

UPVC double glazed window, radiator

Bedroom Two

10'2" x 8'10" (3.1 x 2.7)

UPVC double glazed window, radiator, storage cupboard

Bedroom Three

10'2" x 11'1" (3.1 x 3.4)

UPVC double glazed window, radiator

Shower Room

8'6" x 6'2" (2.6 x 1.9)

White suite comprising of low level WC and wash hand basin, walk in shower cubicle. Tiled walls and flooring, radiator, UPVC double glazed window.

Garage

Outside

Garden to front, side and rear

