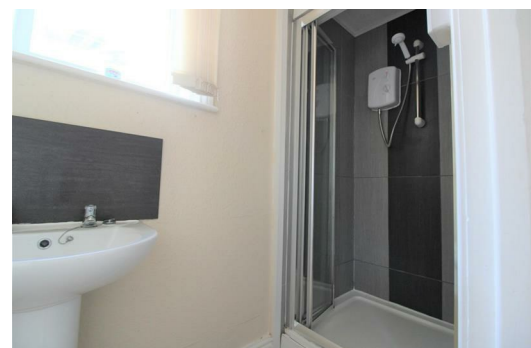
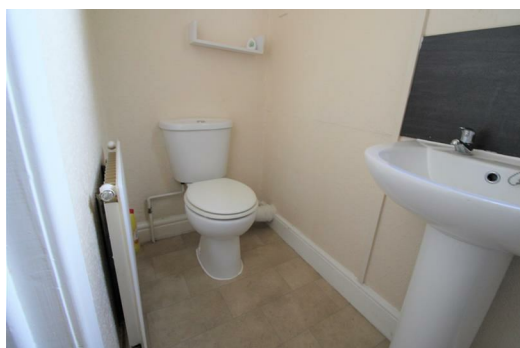





32a Leyland Road, Southport, Merseyside PR9 9JQ

£395 PCM

Berkeley Shaw are pleased to offer this ONE BEDROOM on Leyland Road, Southport for rent. Available now and offered on a FURNISHED basis including; double bed, sofa and appliances. Briefly comprising of; communal entrance hallway, stairs to upper floor, flat entrance and hallway, lounge, kitchen, bedroom and bathroom. Available 01st July 2020 please call us to arrange your viewing straight away on 01519246000. Any housing benefit/universal credit applicants must have rent and deposit in full advance, a homeowner guarantor who works full time and has an excellent credit rating. No pets or smokers permitted.



Energy Efficiency Rating		
	Current	Potential
Very energy efficient - lower running costs		
(92 plus) A		
(81-91) B		
(69-80) C		
(55-68) D		
(39-54) E		
(21-38) F		
(1-20) G		
Not energy efficient - higher running costs		
England & Wales		EU Directive 2002/91/EC 

Environmental Impact (CO ₂) Rating		
	Current	Potential
Very environmentally friendly - lower CO2 emissions		
(92 plus) A		
(81-91) B		
(69-80) C		
(55-68) D		
(39-54) E		
(21-38) F		
(1-20) G		
Not environmentally friendly - higher CO2 emissions		
England & Wales		EU Directive 2002/91/EC 

