

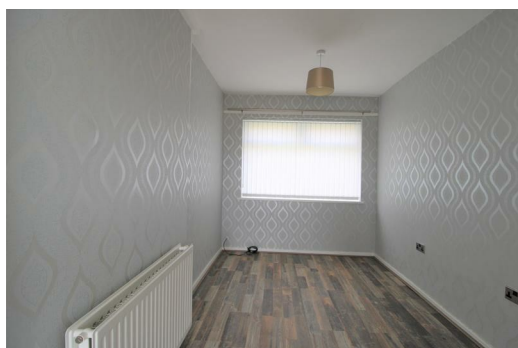


37 Marsh Street, Liverpool, Merseyside L20 2BN

£700 PCM

Berkeley Shaw Estate Agents are pleased to offer a UNFURNISHED REFURBISHED Four Bedroom Semi Detached Property, close to all local amenities, local schools and transport links (2 minute walk to Kirkdale station). The property comprises of hallway with storage, lounge, morning room, kitchen dining room, fitted kitchen with electric oven and hob, four bedrooms, bathroom with shower over bath, separate w.c. central heating and double glazing. Garden to Rear, paved front with off road parking.

Viewing Highly recommended recently refurbished and ready to let straight away, call 01519246000 to book a viewing



Front Exterior

Walled boundary with railings and paved driveway and front

Hallway

Double glazed entrance door and window, staircase to first floor, walk in storage cupboard, blinds

Lounge

Double glazed windows to front and rear, 2 x radiators, gas fire, carpet and blinds

Morning Room

Double glazed window, radiator, laminate flooring (room is open to the hallway, blinds

Kitchen Diner

Double glazed window and exterior door, Laminate flooring, part tiled around kitchen units, range of fitted wall and base units with integrated electric oven and hob, extractor hood, plumbing for washing machine, space for tumble dryer/ dishwasher, 1 1/2 sink with mixer tap, walk in storage cupboard, blinds

Landing

Carpet

Bedroom 1

Double glazed window, radiator, carpet, range of fitted wardrobes, blinds

Bedroom 2

Double glazed window, radiator, carpet, fitted storage cupboard/wardrobe, blinds

Bedroom 3

Double glazed window, radiator, carpet and blinds

Bedroom 4

Double glazed window, radiator, carpet and blinds

Separate W.C.

Double glazed window, radiator, part tiled walls, low level w.c.

Bathroom

Double glazed window, radiator, part tiled walls, white bathroom suite comprising of bath with shower over, shower screen, wash basin with vanity unit below

Rear Exterior

flagged patio area and large lawn.

