



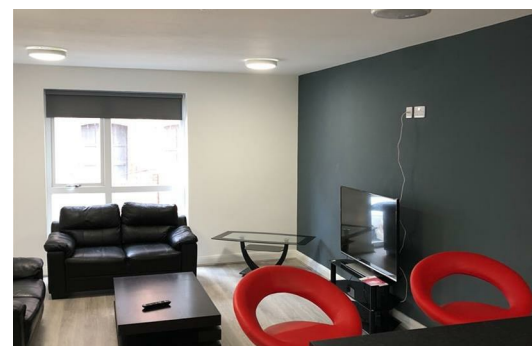
30 Fox Street, Liverpool, Merseyside L3 3BQ

£375 Per Week

STUDENT APARTMENT - CITY CENTRE - 3 BEDS / 3 BATHS - Berkeley Shaw are pleased to offer this three double bedroom apartment where ALL BEDROOMS are ensuite and all with Ikea furniture. Utility bills and WIFI included within the rent.

Communal open plan large kitchen lounge with dining table and integrated appliances and freestanding additional fridge freezer for extra food storage, There is a large flat screen TV mounted to the grey feature wall in the lounge too.

Available from 3rd August 2020 on a 44, 48 or 52 week STUDENT LET. £125 per week per person. Deposit £300 per person. Rent £125 per person per week. Guarantor may be required. Viewings available Now



Bedroom One

Double bedroom with electric wall heater, double bed, wardrobe, desk and chair. Ensuite shower room with sink and toilet and large wall mirror

Bedroom Two

Double bedroom with electric wall heater, carpet, white decor, double bed, wardrobe and desk with chair. Ensuite shower room with sink and toilet and large wall mirror

Bedroom Three

Double bedroom with electric wall heater, carpet, white decor, double bed, wardrobe and desk with chair. Ensuite shower room with sink and toilet and large wall mirror

Lounge

Open plan, laminate flooring, large window, wall mounted TV, leather sofas, dining table, side unit and grey feature wall

Kitchen

Open plan kitchen with full range of wall and base units worktops, integrated electric oven, hob and extractor fan. Integrated fridge with icebox and secondary tall fridge freezer for s=extra food storage. there is also a 7kg washing machine in place too.

| Energy Efficiency Rating | | |
|---|---------|-----------|
| | Current | Potential |
| Very energy efficient - lower running costs | | |
| (92 plus) A | | |
| (81-91) B | | |
| (69-80) C | | |
| (55-68) D | | |
| (39-54) E | | |
| (21-38) F | | |
| (1-20) G | | |
| Not energy efficient - higher running costs | | |
| England & Wales | | |
| EU Directive 2002/91/EC | | |

| Environmental Impact (CO ₂) Rating | | |
|---|---------|-----------|
| | Current | Potential |
| Very environmentally friendly - lower CO ₂ emissions | | |
| (92 plus) A | | |
| (81-91) B | | |
| (69-80) C | | |
| (55-68) D | | |
| (39-54) E | | |
| (21-38) F | | |
| (1-20) G | | |
| Not environmentally friendly - higher CO ₂ emissions | | |
| England & Wales | | |
| EU Directive 2002/91/EC | | |

