



## 5 Purley Road, Liverpool, Merseyside L22 6QH

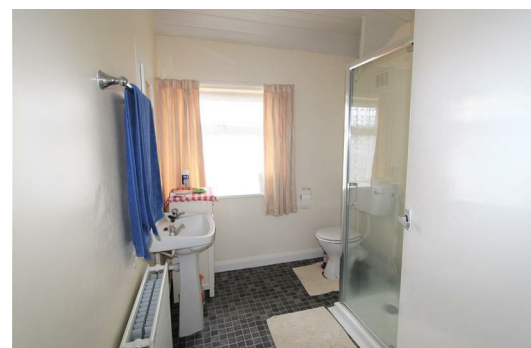
Asking Price £149,950

Ideal FIRST TIME BUY or DOWNSIZE property.....maybe even a "DO UP" or INVESTMENT property.

This 2 Bedroom End Terrace holds the advantage of off road parking, and large rear patio.

Internally there is a large lounge, and a kitchen-diner. To the first floor there are 2 bedrooms and a shower room.

Contact Berkeley Shaw on 0151 924 6000 to arrange an early viewing.



**Hallway**  
UPVC Door to front, Storage cupboard

**Lounge**  
12'5" x 12'5" (3.8 x 3.8)  
UPVC Double Glazed Window, Radiator, Gas fire

**Kitchen**  
15'8" x 7'10" (4.8 x 2.4)  
Assortment of wall and base units, stainless steel sink with mixer tap, UPVC sliding patio doors to rear,UPVC Window storage cupboard under stairs

**Shower Room**  
8'2" x 6'10" (2.5 x 2.1)  
Shower Cubicle, Low level WC, Pedestal Wash Basin, UPVC Double Glazed Window, partly tiled, storage for boiler,

**Bedroom 1**  
13'9" x 10'5" (4.2 x 3.2)  
Built in wardrobe, UPVC Double Glazed Window, Radiator

**Bedroom 2**  
11'1" x 8'10" (3.4 x 2.7)  
UPVC Double Glazed Window, Radiator

**External**  
To the front is a flagged driveway and decorative stone. To the rear is a flagged patio with scope for extension subject to relevant permissions.

