



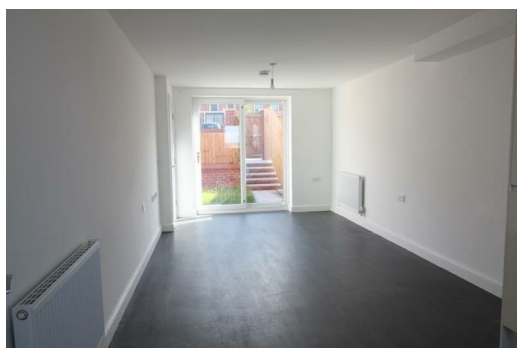
6 St. Alphonsus Street, Liverpool, Merseyside L5 7TD

£750 PCM

NEW BUILD - 3 BEDROOM Semi-Detached house for RENT. Berkeley Shaw are pleased to offer this fabulous three bedroom semi-detached house offered UNFURNISHED but including integrated appliances; full size fridge freezer, dishwasher, washer dryer and electric fan oven and gas hob. To the ground floor we have a downstairs WC, large open plan kitchen lounge space with patio doors to the well maintained garden. Upstairs we have a first floor comprising two double bedrooms and a family bathroom with white modern three piece suite, airing storage cupboard and on the top, third floor a double bedroom with ensuite shower room and skylight. There is SECURED PARKING to rear.

AVAILABLE from 14 October 2020 and there are NO AGENCY FEES to pay.

Call us on 01519246000 to arrange a viewing. We cannot accept housing benefit applicants due to the nature of the mortgage on this property.



Hallway

With UPVC front door with frosted glass panel, radiator vinyl wood effect flooring and radiator

Open Plan Living Room/Kitchen

25'9" x 10'7" (7.874 x 3.227)

UPVC double glazed window to front and Patio doors to rear, 2 radiators, range of wall and base units with stainless steel single drainer sink with mixer tap, gas hob and chimney style extractor fan, Integrated Fridge Freezer, washing machine, dish washer , Vaillant Combi wall mounted boiler, vinyl wood effect flooring

Rear Hallway

9'6" x 3'4" (2.903 x 1.038)

UPVC door with double glazed panel leading to rear garden and secure parking, radiator vinyl wood effect flooring

First Floor Landing

With storage cupboard with shelving , stairs to 2nd floor

Bedroom 1

13'8" x 6'9" (4.174 x 2.063)

UPVC double glazed window to front, radiator

Bedroom 2

13'8" x 10'4" (4.175 x 3.171)

UPVC double glazed window to rear, radiator

Family Bathroom

5'8" x 7'9" (1.729 x 2.383)

Paneled bath with mains shower over and glass shower screen, pedestal wash hand basin, low level WC, ladder towel rail, part tiled walls and vinyl flooring

Bedroom 3 2nd Floor

9'9" x 10'6" (2.9936 x 3.206)

UPVC double glazed window to front, radiator and access to loft

En suite

9'5" x 4'7" (2.889 x 1.402)

Velux window, ladder towel rail,walk in shower cubicle with mains shower, low level WC, pedestal wash hand basin and shaving socket

Front of Property

Small walled garden with paving flags

Rear Garden

Paved patio area small lawned area

