



## 22B Longfield Avenue, Liverpool, Merseyside L23 2TT

**£800 PCM**

Welcome to Longfield Avenue, Crosby - a charming location that could be the perfect setting for your new home! TO LET Two Bedroom First Floor Apartment PART FURNISHED / UNFURNISHED. This delightful apartment boasts one reception room, ideal for relaxing or entertaining guests. With two bedrooms, there's plenty of space for guests, or even a home office. The property features a well-maintained bathroom, ensuring your comfort and convenience.

Situated in a desirable area, this apartment offers the benefits of double glazing, providing a peaceful and energy-efficient living environment. Whether you're looking for a starter home or a place to downsize this property has the potential to meet your needs. Don't miss out on the chance to make Longfield Avenue your new address!

Deposit: £800  
Minimum Term: 12 months  
Council Tax Band: A



## Front Exterior

Communal gardens, On Street Parking

## Hallway

4'10" x 4'10" (1.492 x 1.479)

Composite Entrance Door, Radiator, Carpets, hanging space for coats

## Lounge

16'11" x 11'10" (5.160 x 3.618)

Double glazed window, gas fire, radiator, laminate flooring.

## Kitchen Diner

14'9" (into diner) x 9'0" (4.500 (into diner) x 2.747)

Double glazed windows, Double glazed exterior door to balcony, laminate flooring, 2 x storage cupboards, Boiler, kitchen area has a range of fitted wall and base units, single drainer sink, under counter fridge and freezer, washing machine, cooker, extractor hood.

## Balcony

Tiled over looking communal garden to rear

## Inner Hallway

3'3" x 5'11" (1.002 x 1.818)

Carpet, access to bedrooms and bathroom, floor to ceiling storage cupboard

## Bedroom 1

11'11" x 12'11" (3.636 x 3.952)

Double glazed window, radiator, laminate flooring, blinds

## Bedroom 2

11'7" x 9'10" (3.532 x 3.008)

Double glazed window, Radiator, carpet

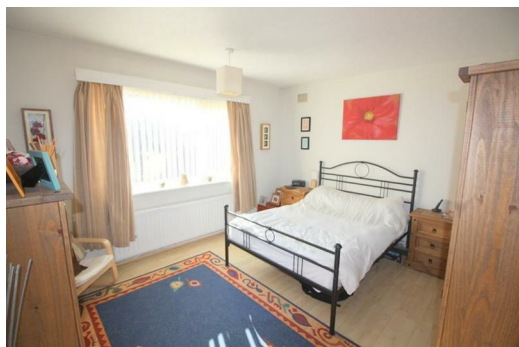
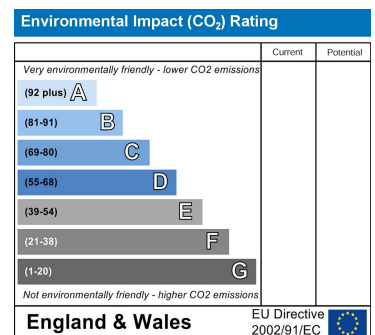
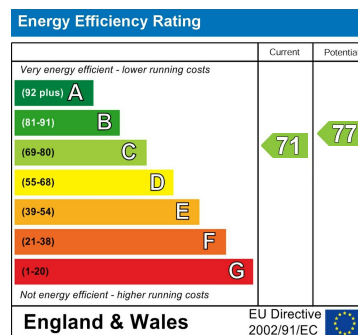
## Bathroom

5'10" x 7'8" (1.790 x 2.345)

Double glazed window, fully tiles walls, laminate flooring, bathroom suite comprises of Bath with electric shower over, low level w.c., sink

## Rear Exterior

Communal Gardens and parking, Access to lockable storage shed.



Berkeley Shaw Estate Agents Limited.  
Company No. 0784754

Berkeley Shaw Real Estate Limited.  
Company No. 05206927

