



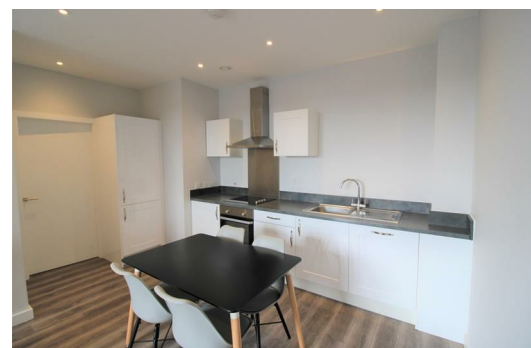
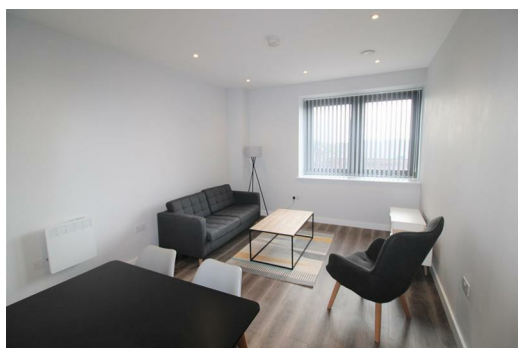
Crosby Gardens, 16 Crosby Road North, Liverpool, Merseyside L22 0AD

£850 PCM

Crosby Gardens is a stunning residential development set in the heart of one of Liverpool's most affluent suburbs. We have a TWO BED Furnished Apartment on 3rd Floor. The Development is within minutes of Crosby Beach, these beautifully-appointed apartments are designed for professionals working in the city, but looking for a relaxed coastal lifestyle. Crosby Beach is home to Sir Antony Gormley's iconic art installation, 'Another Place'.

Crosby was recently named by 'The Sunday Times' as one of the top 5 places to live in the North West and is popular with sports stars and celebrities. Crosby Gardens complete with concierge, integrated appliances, and optional on-site car parking.

****PLEASE CALL TO BOOK APPOINTMENT 01519246000 ****



Hallway

Storage Cupboard with plumbing for washing machine

Lounge/ Kitchen

Double glazed window, electric wall heaters, wooden flooring, kitchen comprises of a range of fitted base and wall units, integrated Electric Oven and Hob, Fridge Freezer, dishwasher

Bedroom 1

Double glazed window, electric heater, furnishing includes: - Double bed with mattress, side tables, chest of drawers, built in wardrobes

Bedroom 2

Double glazed window, electric heater, furnishing includes: - Double bed with mattress, side tables, chest of drawers, built in wardrobes

Bathroom

Fully tiled, walk in electric shower, low level w.c. sink unit.

Storage Room

Plumbing point for washing machine, fuse board, sockets

Energy Efficiency Rating		
	Current	Potential
Very energy efficient - lower running costs		
(92 plus) A		
(81-91) B		
(69-80) C		
(55-68) D		
(39-54) E		
(21-38) F		
(1-20) G		
Not energy efficient - higher running costs		
England & Wales	EU Directive 2002/91/EC	

Environmental Impact (CO ₂) Rating		
	Current	Potential
Very environmentally friendly - lower CO ₂ emissions		
(92 plus) A		
(81-91) B		
(69-80) C		
(55-68) D		
(39-54) E		
(21-38) F		
(1-20) G		
Not environmentally friendly - higher CO ₂ emissions		
England & Wales	EU Directive 2002/91/EC	

