

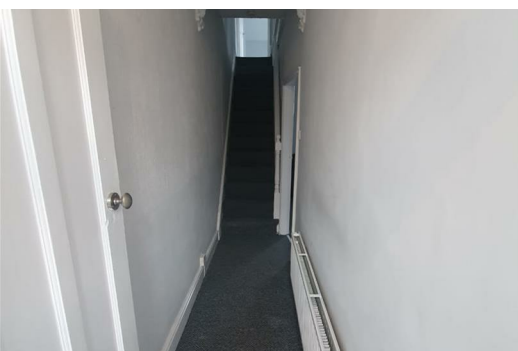


19 Palatine Road, Wallasey, Merseyside CH44 7EN

£550 PCM

3 BEDROOM UNFURNISHED MID TERRACED HOUSE Property comprising of; entrance hallway, through lounge/diner modern kitchen with freestanding electric cooker, freestanding fridge/freezer, downstairs bathroom, three bedrooms. There is rear yard

Call us on 01519246000 to arrange a viewing!



Front Exterior
Walled boundary

Hallway
Entrance Door, carpet, radiator and staircase to first floor

Through Lounge Diner
UPVC Double glazed windows, radiators, carpet

Kitchen
UPVC Double glazed exterior door, UPVC Double glazed window kitchen comprises of a range of fitted wall and base units, single stainless steel sink unit with mixer tap, freestanding electric cooker, freestanding fridge/ freezer part tiled walls, radiator, boiler

Bathroom
UPVC Double glazed window, tiled walls, lino flooring, bathroom comprises of white three piece suite with shower over bath, low level w.c. pedestal wash basin, radiator and lino flooring.

Landing
carpet

Bedroom 1
UPVC Double glazed windows, radiator, carpet

Bedroom 2
UPVC Double glazed window, radiator and carpet

Bedroom 3
UPVC Double glazed window, radiator and radiator

Rear Exterior
Walled boundary , concrete wooden rear gate.

