



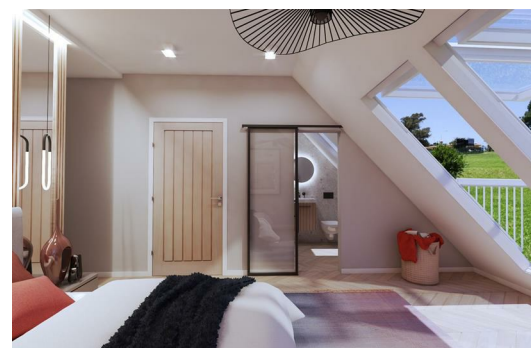
Copper Beech View St Georges Road, Liverpool, Merseyside L38 3AB

Asking Price £525,000

Beech Grove is a unique development within extensive grounds of 'The Cottage'- off St Georges Road, Hightown. It comprises four unique 5 bedroom houses of 2 distinct types. 'The Blundell' & 'The Paddock View' accessed via a private driveway, centered around a stunning Copper Beach Tree.

'The Paddock View' is a 5 bedroom detached town house over three levels. Benefiting from a private driveway and gardens, and set back from the private close with unique views backing onto the greenbelt paddock fields to the rear.

The layout benefits from open plan kitchen and living facing out on to the garden, with unique third floor master suite bedroom complete with dressing area, en suite and balcony roof lights with views over the adjacent paddock and fields.



Hallway

Living Room

17'8" x 11'5" (5.40 x 3.50)

Kitchen Dining Room

20'9" x 18'8" (6.350 x 5.700)

Utlity Room

First Floor

Bedroom Two

14'1" x 12'1" (4.30 x 3.685)

En Suite

Bedroom Three

9'10" x 9'10" (3.00 x 3.00)

Bedroom Four

12'7" x 9'10" (3.850 x 3.00)

Bedroom Five

16'4" x 9'11" (4.995 x 3.025)

En Suite

Family Bathroom

Second Floor

Master Suite

15'2" x12'1" (4.645 x3.685)

En Suite

Energy Efficiency Rating		
	Current	Potential
Very energy efficient - lower running costs		
(92 plus) A		
(81-91) B		
(69-80) C		
(55-68) D		
(39-54) E		
(21-38) F		
(1-20) G		
Not energy efficient - higher running costs		
England & Wales		
EU Directive 2002/91/EC		

Environmental Impact (CO ₂) Rating		
	Current	Potential
Very environmentally friendly - lower CO ₂ emissions		
(92 plus) A		
(81-91) B		
(69-80) C		
(55-68) D		
(39-54) E		
(21-38) F		
(1-20) G		
Not environmentally friendly - higher CO ₂ emissions		
England & Wales		
EU Directive 2002/91/EC		

