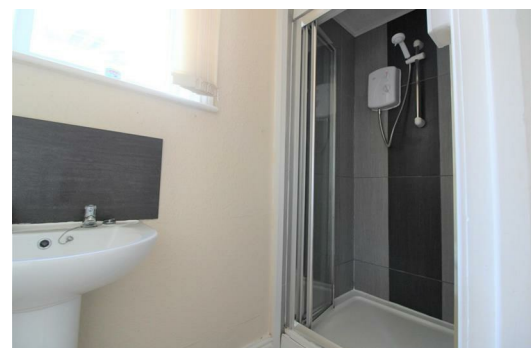
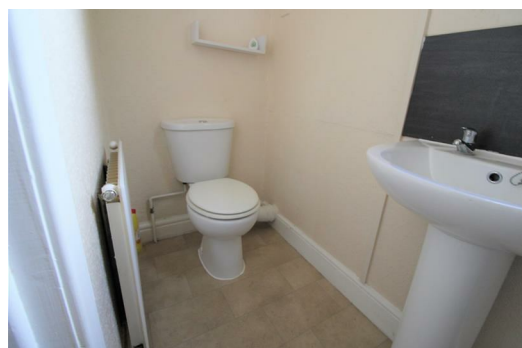





32a Leyland Road, Southport, Merseyside PR9 9JQ

£395 PCM

Berkeley Shaw are pleased to offer this ONE BEDROOM on Leyland Road, Southport for rent. Available now and offered on a PART FURNISHED basis including; double bed and appliances. Briefly comprising of; communal entrance hallway, stairs to upper floor, flat entrance and hallway, lounge, kitchen, bedroom and bathroom. Available January 2021 please call us to arrange your viewing straight away on 01519246000. Any housing benefit/universal credit applicants must have rent and deposit in full advance, a homeowner guarantor who works full time and has an excellent credit rating. No pets or smokers permitted.



Energy Efficiency Rating		
	Current	Potential
Very energy efficient - lower running costs		
(92 plus) A		
(81-91) B		
(69-80) C		
(55-68) D		
(39-54) E		
(21-38) F		
(1-20) G		
Not energy efficient - higher running costs		
England & Wales EU Directive 2002/91/EC 		

Environmental Impact (CO ₂) Rating		
	Current	Potential
Very environmentally friendly - lower CO ₂ emissions		
(92 plus) A		
(81-91) B		
(69-80) C		
(55-68) D		
(39-54) E		
(21-38) F		
(1-20) G		
Not environmentally friendly - higher CO ₂ emissions		
England & Wales EU Directive 2002/91/EC 