



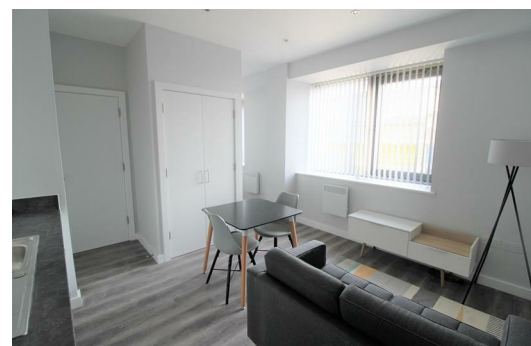
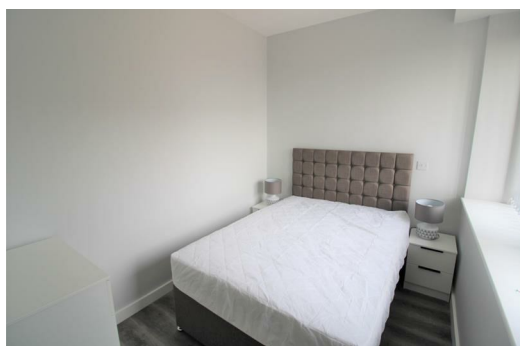
## Crosby Gardens, 16 Crosby Road North, Liverpool, Merseyside L22 0AD

£555 PCM

LUXURY - STUNNING- DELUXE - COMFORTABLE are a few words to Describe the newest Development to come on the RENTAL market CROSBY GARDENS is set in the heart of one of Liverpool's most affluent suburbs. We have a mixture of STUDIO, ONE BED and TWO BED Furnished/ Unfurnished Apartments. The Development is within minutes of Crosby Beach, these beautifully-appointed apartments are designed for professionals working in the city, but looking for a relaxed coastal lifestyle. Crosby Beach is home to Sir Antony Gormley's iconic art installation, 'Another Place'.

Crosby was recently named by 'The Sunday Times' as one of the top 5 places to live in the North West and is popular with sports stars and celebrities. Crosby Gardens complete with concierge, integrated appliances, and optional on-site parking.

PLEASE CALL TO BOOK APPOINTMENT 01519246000



## Lounge/ Kitchen


Double glazed window, electric wall heaters, wooden flooring, kitchen comprises of a range of fitted base and wall units, integrated Electric Oven and Hob, under counter integrated fridge with icebox, Integrated Washing Machine, built in Storage Cupboard with hanging space

## Bedroom

Open to lounge, double glazed window, electric heater

## Bathroom

Fully tiled, walk in electric shower, low level w.c. sink unit.

Energy Efficiency Rating		Current	Potential
<i>Very energy efficient - lower running costs</i>			
(92 plus) <b>A</b>			
(81-91) <b>B</b>			
(69-80) <b>C</b>			
(55-68) <b>D</b>		62	62
(39-54) <b>E</b>			
(21-38) <b>F</b>			
(1-20) <b>G</b>			
<i>Not energy efficient - higher running costs</i>			
<b>England &amp; Wales</b>		EU Directive 2002/91/EC	

Environmental Impact (CO <sub>2</sub> ) Rating		Current	Potential
<i>Very environmentally friendly - lower CO<sub>2</sub> emissions</i>			
(92 plus) <b>A</b>			
(81-91) <b>B</b>			
(69-80) <b>C</b>			
(55-68) <b>D</b>			
(39-54) <b>E</b>			
(21-38) <b>F</b>			
(1-20) <b>G</b>			
<i>Not environmentally friendly - higher CO<sub>2</sub> emissions</i>			
<b>England &amp; Wales</b>		EU Directive 2002/91/EC	