



Apartment 194 Royal Quay, Liverpool, Merseyside L3 4EY

Offers In The Region Of £160,000

Adjacent to the historic Albert Dock, just a stone's throw from Liverpool One, The Liverpool Echo Arena and Liverpool's famous waterfront, this property is certainly at the hub of all the city has to offer. You'll be spoilt with the range of amazing bars and restaurants all within walking distance.

The gated development has its own inner courtyard and consists of 4 main blocks. Entered through a communal hallway with post boxes and lifts to all floors, the property comprises entrance hall with storage cupboards, open plan lounge and fitted kitchen with granite work surfaces, 2 double bedrooms - the master having an en-suite shower room and balcony - and family bathroom with granite accents.

Benefits include; fob entry system, entry phone, on-site caretaker, parking, inner courtyard, central location.



Entrance Hallway

Telephone entry system, storage cupboard housing gas/electric meters, laminate flooring

Living/Dining Area

16'0" x 8'11" (4.88 x 2.74)

Laminate flooring, radiator, double-glazed window and french door leading to balcony

Kitchen

6'11" x 6'0" (2.13 x 1.83)

A range of wood effect base, wall and drawer units, stainless steel circular sink with mixer taps, stainless steel electric oven, four ring halogen hob, extractor hood, space for free-standing fridge/freezer and plumbing for dishwasher and washer/dryer, part-tiles walls and tiled floors, recessed halogen downlighters.

Bedroom 1

10'11" x 9'9" (3.35 x 2.99)

Radiator, double-glazed door to balcony with views towards the city and docks, door to;

En-Suite

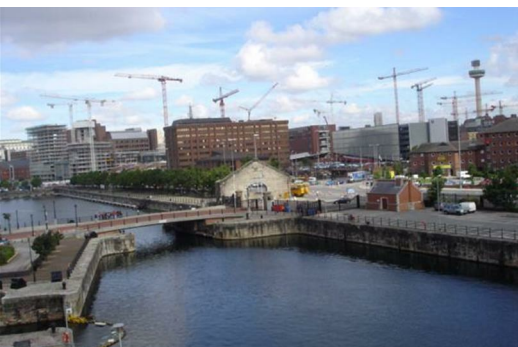
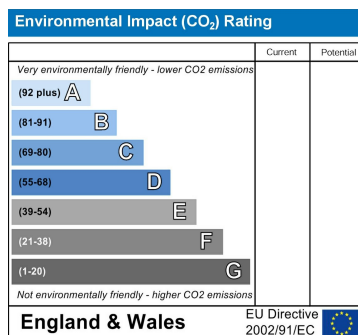
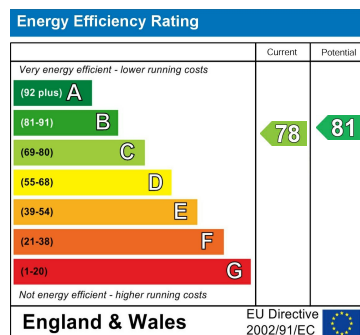
Step-in shower cubicle, wash hand basin, low-level wc, recessed halogen downlighters, shaver point, tiled walls and tiled floors.

Bedroom 2

Radiator, double-glazed 'porthole' style window, storage cupboard housing Valliant combi-boiler

Bathroom

Three piece white suite comprising of bath with shower attachemnt, wash hand basin, low-level wc, wall mounted mirror, shaver point, tiled walls and floors.



Berkeley Shaw Estate Agents Limited.
Company No. 0784754

Berkeley Shaw Real Estate Limited.
Company No. 05206927

