

Apartment 82 Unity Building, Liverpool, Merseyside L3 9BZ

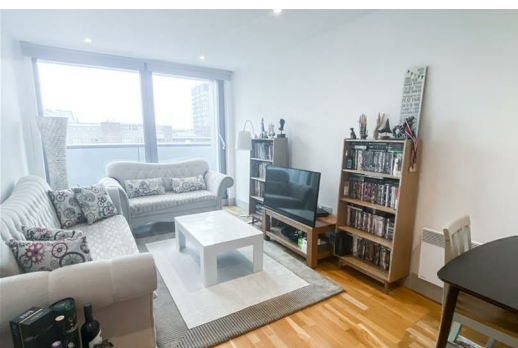
Offers In The Region Of £130,000

Berkeley Shaw are pleased to bring to the sales market this immaculate one bedroom apartment within Unity Building, Rumbold Place.

Positioned on the seventh floor, this apartment boasts lovely views from both the bedroom and balcony which is accessible from the open plan living/dining area and fully fitted white modern kitchen with integrated appliances.

The bedroom is light, bright, spacious and has plenty of built in wardrobe space. There is also additional built in storage space in the hallway. Off the hallway is the modern tiled bathroom with shower over bath.

Unity Building offers a 24 hour residents only gym, 24 hour concierge and secure parking.



Hallway

Wood flooring, floor to ceiling storage cupboards, doors leading to bathroom, bedroom and open plan living.

Open Plan Lounge/Dining Area

Wood flooring, spot lights in ceiling, sliding door leading to balcony, open plan living/dining area leading to kitchen area.

Kitchen

White wall and base fixed units, integrated fridge, freezer, dishwasher and washing machine. Electric oven and hob with extractor fan, stainless steel sink with draining board.

Bathroom

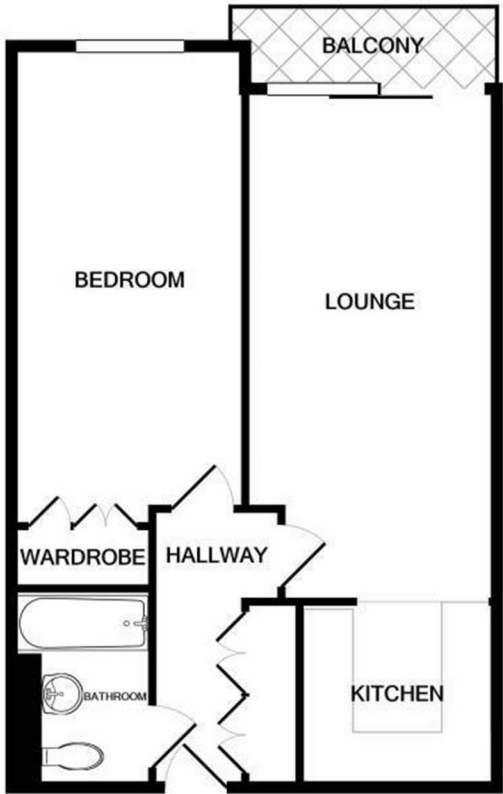
Fully tiled both wall and floor, toilet, sink basin, bath with shower over and shower screen. Feature mirror with shelving and heated towel rail.

Bedroom

Carpeted flooring, front aspect window, built in storage/wardrobes, spot lights and electric heater.

Energy Efficiency Rating		
	Current	Potential
Very energy efficient - lower running costs		
(92 plus) A		
(81-91) B		
(69-80) C		
(55-68) D		
(39-54) E		
(21-38) F		
(1-20) G		
Not energy efficient - higher running costs		
England & Wales		
EU Directive 2002/91/EC		

Environmental Impact (CO ₂) Rating		
	Current	Potential
Very environmentally friendly - lower CO ₂ emissions		
(92 plus) A		
(81-91) B		
(69-80) C		
(55-68) D		
(39-54) E		
(21-38) F		
(1-20) G		
Not environmentally friendly - higher CO ₂ emissions		
England & Wales		
EU Directive 2002/91/EC		



Whilst every attempt has been made to ensure the accuracy of the floor plan contained here, measurements of doors, windows, rooms and any other items are approximate and no responsibility is taken for any error, omission, or mis-statement. This plan is for illustrative purposes only and should be used as such by any prospective purchaser. The services, systems and appliances shown have not been tested and no guarantee as to their operability or efficiency can be given
Made with Metropix ©2020

