



## Beetham Plaza, 25 The Strand, Liverpool, Merseyside L2 0XJ

£1,150 PCM

Berkeley Shaw are pleased to offer this high specification, luxury apartment on the fourth floor of the exclusive Beetham Plaza development.

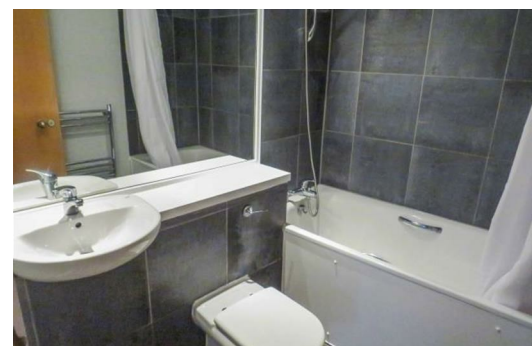
The complex boasts a number of benefits for residents, including a concierge, lifts access, underground secure parking, communal gymnasium and external recreation areas, as well as secure underground parking facilities, high standard, with high quality fixtures and fittings utilised throughout, and offering an impressive level of space measuring in excess of 1,119 square feet. The property comprises entrance hall, spacious open plan living/dining area, fully fitted and integrated kitchen, two double bedrooms with master having en-suite shower room and family bathroom with bath and shower. Lounge/dining, kitchen and both bedrooms all benefit from spectacular views onto The Strand and the Three Graces.


An early inspection of this wonderful home is recommended in order to not miss out on a fantastic opportunity.

Council Tax band: E

Deposit: £1,150

Rental Duration: minimum 6 months



Energy Efficiency Rating		
	Current	Potential
Very energy efficient - lower running costs (92 plus) <b>A</b>		
(81-91) <b>B</b>		
(69-80) <b>C</b>		
(55-68) <b>D</b>		
(39-54) <b>E</b>		
(21-38) <b>F</b>		
(1-20) <b>G</b>		
Not energy efficient - higher running costs		
	73	77
<b>England &amp; Wales</b>	EU Directive 2002/91/EC 	

Environmental Impact (CO <sub>2</sub> ) Rating		
	Current	Potential
Very environmentally friendly - lower CO <sub>2</sub> emissions (92 plus) <b>A</b>		
(81-91) <b>B</b>		
(69-80) <b>C</b>		
(55-68) <b>D</b>		
(39-54) <b>E</b>		
(21-38) <b>F</b>		
(1-20) <b>G</b>		
Not environmentally friendly - higher CO <sub>2</sub> emissions		
<b>England &amp; Wales</b>	EU Directive 2002/91/EC 