



## Unity Building Rumford Place, Liverpool, Merseyside L3 9BZ

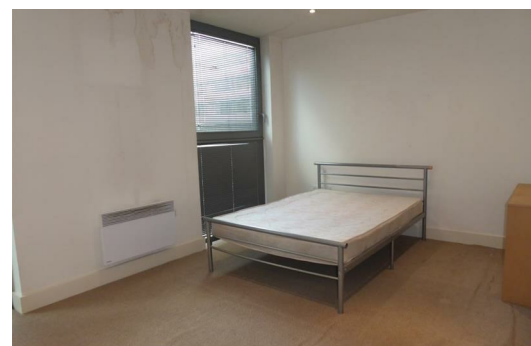
### Auction Guide £145,000

FOR SALE BY ONLINE AUCTION Starting Bid £145,000. Terms & Conditions Apply..

Situated on the fringes of the City Centre in Liverpool's business district off Chapel Street, close enough to walk home, far enough away for peace and quiet from Saturday night revellers. The surrounding area offers great access to shops, restaurants, museums and attractions, easy access to the City's rail and bus network, and a stone's throw from the iconic Liverpool waterfront. All this within walking distance of your bright and sizable apartment.

This spacious apartment is approached through a communal hallway with access to the private courtyard and lifts to all floors. Open plan living/dining area with separate breakfast kitchen, 2 generous double bedrooms - with en-suite to the master and stylish bathroom.

The block benefits from twenty four hour concierge, complimentary gymnasium, high speed lifts and open air courtyard, this is one of Liverpool's most sought after developments.



## Open Plan Living/Kitchen

16'3" x 11'1" (4.97 x 3.39)

Wood strip flooring, 3 x ceiling to floor double glazed windows, 1 x ceiling to floor double glazed sliding door leading to balcony, 2 x wall mounted electric heaters, recessed spotlights to ceiling.

## Kitchen

9'5" x 6'4" (2.89 x 1.94)

Range of wall and base units, flat edged work surfaces, integrated electric hob and oven with extractor hood and steel splashback, 1 & 1/2 bowl sink and drainer with mixer taps, integrated fridge freezer, integrated dishwasher, integrated washer/dryer, recessed spotlights to ceiling.

## Master Bedroom

16'4" x 10'7" (4.98 x 3.25)

2 x ceiling to floor double glazed windows, wall mounted electric heater, built in wardrobes, recessed spotlights to ceiling.

## En-Suite

7'2" x 4'1" (2.19 x 1.26)

Tiled flooring and walls, low level w/c, hand wash basin, built in shower cubicle with power shower, chrome vertical towel warmer, recessed spotlights to ceiling.

## Bedroom 2

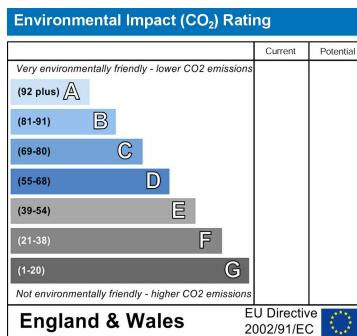
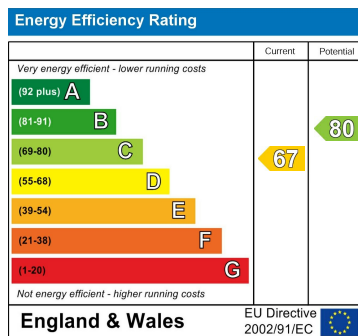
16'3" x 10'7" (4.97 x 3.24)

2 x ceiling to floor double glazed windows, wall mounted electric heater, recessed spotlights to ceiling.

## Bathroom

7'8" x 5'6" (2.34 x 1.70)

Tiled walls and flooring, low level w/c, hand wash basin, tiled bath with shower attachment and splash guard, chrome vertical towel warmer.



Berkeley Shaw Estate Agents Limited.  
Company No. 0784754

Berkeley Shaw Real Estate Limited.  
Company No. 05206927

