



Cornwallis Court, 9 Cornwallis Street, Liverpool, Merseyside L1 5EL

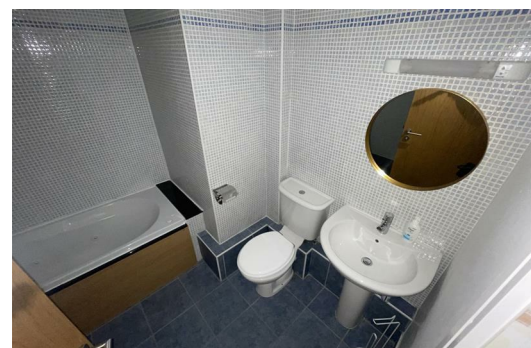
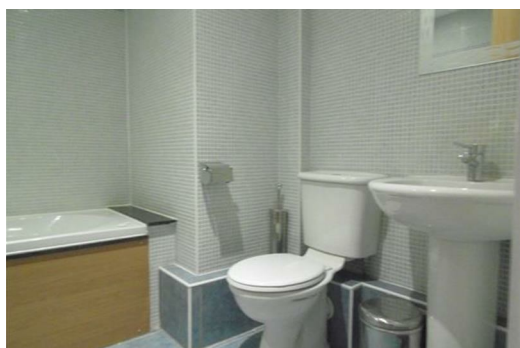
£1,150 PCM

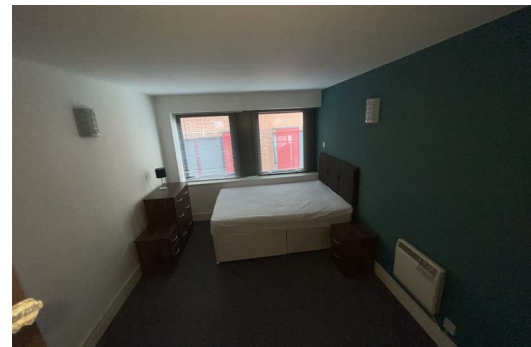
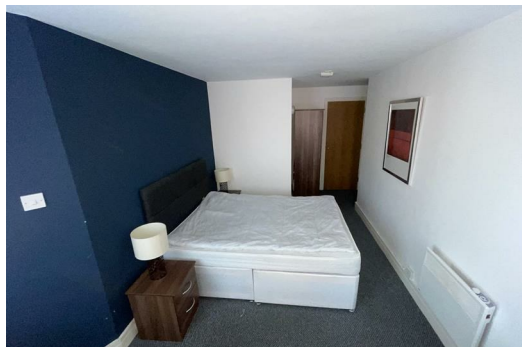
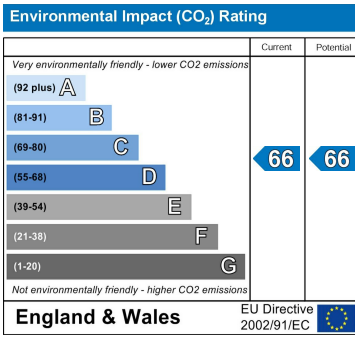
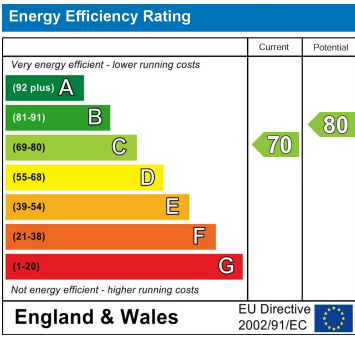
Berkeley Shaw are pleased to offer this two bedroom FURNISHED duplex PENTHOUSE Apartment located in the Cornwallis Court development, Liverpool. The apartment briefly comprises of entrance hall, spacious lounge with double width balcony, fitted kitchen, two double bedrooms, two bath/shower rooms. Benefits include en-suite to the master, spacious accommodation and secure underground parking.

Deposit: £1,150

Minimum Contract: 12 months

Council Tax Band: E





Berkeley Shaw Estate Agents Limited.
Company No. 0784754

Berkeley Shaw Real Estate Limited.
Company No. 05206927

