



6 11 Sir Thomas Street, Liverpool, Merseyside L1 6BW

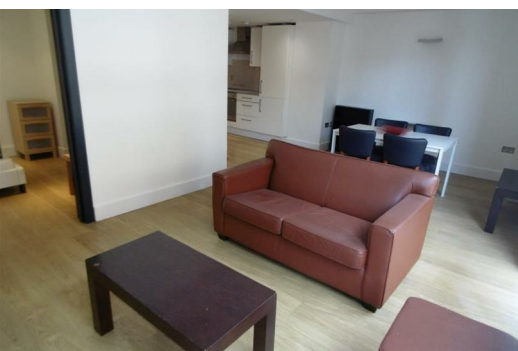
Asking Price £85,000

If you are in the market for an ideal investment opportunity or you are looking for a city centre base, this could be the perfect apartment for you!

Berkeley Shaw are delighted to present to the market this one bedroom apartment on Sir Thomas Street in the heart of Liverpool City Centre. Positioned in an established building and offering spacious accommodation, to include good sized lounge open plan to dining area and modern fitted kitchen, double bedroom and tiled bathroom.

A viewing is recommended to appreciate its potential.

Additional Information:
Service Charge- £1,800 PA
Ground Rent- £200 PA
Lease Length- 125 Years



Hallway

Bathroom

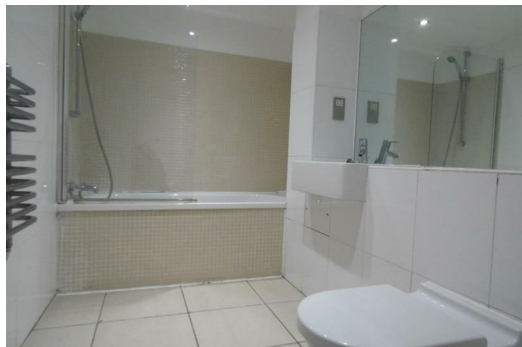
Bedroom

Living/Dining area

Kitchen

Energy Efficiency Rating		
	Current	Potential
Very energy efficient - lower running costs		
(92 plus) A		
(81-91) B		
(69-80) C		
(55-68) D		
(39-54) E		
(21-38) F		
(1-20) G		
Not energy efficient - higher running costs		
England & Wales	EU Directive 2002/91/EC	

Environmental Impact (CO ₂) Rating		
	Current	Potential
Very environmentally friendly - lower CO ₂ emissions		
(92 plus) A		
(81-91) B		
(69-80) C		
(55-68) D		
(39-54) E		
(21-38) F		
(1-20) G		
Not environmentally friendly - higher CO ₂ emissions		
England & Wales	EU Directive 2002/91/EC	



Berkeley Shaw Estate Agents Limited.
Company No. 0784754

Berkeley Shaw Real Estate Limited.
Company No. 05206927

