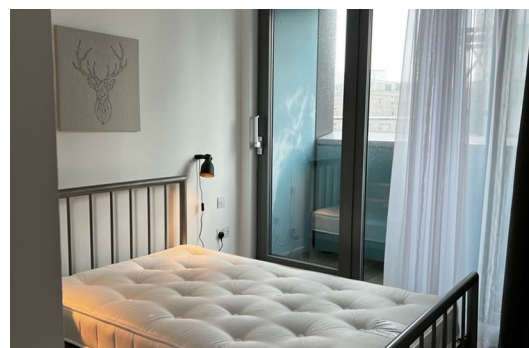
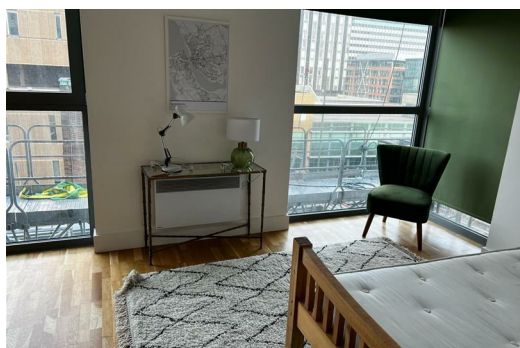


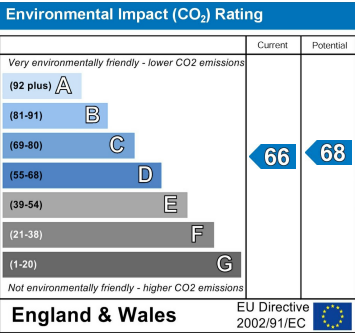
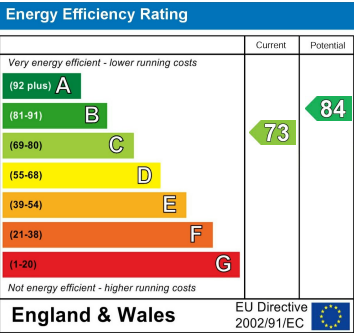


Unity Building, 3 Rumford Place, Liverpool, Merseyside L3 9BZ
£1,495 PCM

Berkeley Shaw are pleased to offer this 3 bedroom duplex apartment located in Liverpool City Centre. The property briefly comprises of entrance hall, 3 double bedrooms with en suit to master and family bathroom, open plan kitchen and lounge. The property is furnished to a high standard and includes all white goods. It benefits from spectacular views across the Mersey and City Center, residents gymnasium on site and 24 hour concierge, The property also has 1 underground parking space and broadband included.

Ideally located close to local transport links and Moorfields station.





Berkeley Shaw Estate Agents Limited.
Company No. 0784754

Berkeley Shaw Real Estate Limited.
Company No. 05206927

