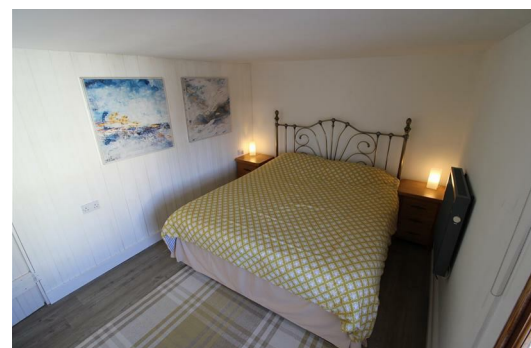





Bath Cottage Bath Street, Liverpool, Merseyside L22 5NZ

£950 PCM

UNIQUE LISTING - Berkeley Shaw are delighted to offer this 3/4 BEDROOM detached cottage for rent on a FURNISHED basis in Waterloo. Located just off Marine Terrace facing Marine Lake. The property is Grade II listed with some magnificent period features but been restored to offer a modern clean bright setting for a small family or couple. Due to the fact this property has two large double bedrooms and two single bedrooms it may not be ideal for a larger family. There has been a recent heating upgrade installation and the property benefits from its own courtyard suntrap and on street parking. To arrange a viewing please call us on 01519246000 today to avoid missing out!



Energy Efficiency Rating		
	Current	Potential
Very energy efficient - lower running costs		
(92 plus) A		
(81-91) B		
(69-80) C		
(55-68) D		
(39-54) E		
(21-38) F		
(1-20) G		
Not energy efficient - higher running costs		
England & Wales EU Directive 2002/91/EC 		

Environmental Impact (CO ₂) Rating		
	Current	Potential
Very environmentally friendly - lower CO2 emissions		
(92 plus) A		
(81-91) B		
(69-80) C		
(55-68) D		
(39-54) E		
(21-38) F		
(1-20) G		
Not environmentally friendly - higher CO2 emissions		
England & Wales EU Directive 2002/91/EC 