

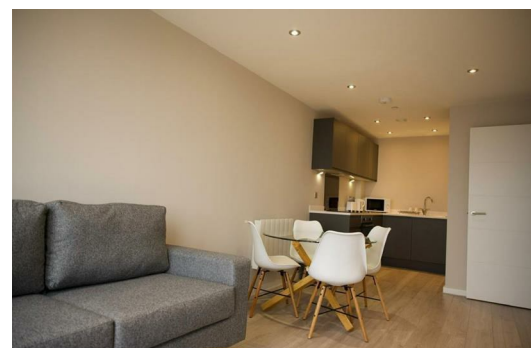
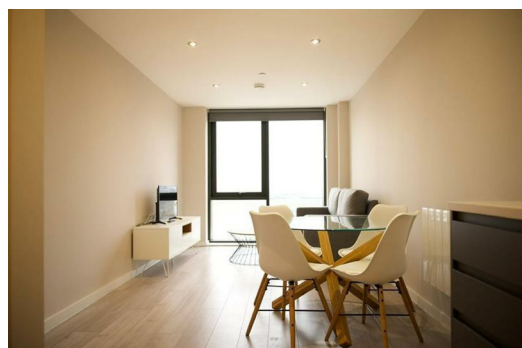
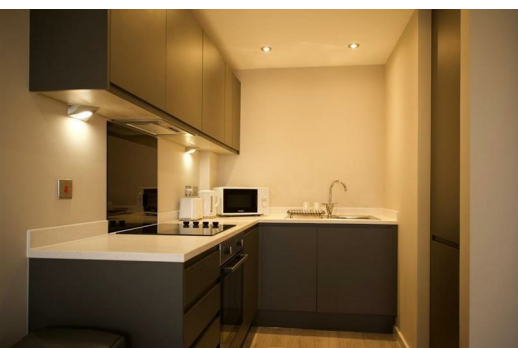


Park Central Jesse Hartley Way, Liverpool, Merseyside L3 0AY

Price Guide £150,000

We are pleased to offer for sale, this one bedroom, second floor apartment with river views. This spacious apartment is situated in a popular development within the L3 area. Set in the heart of the "10 streets project" the property briefly comprises; Communal entrance, Lift access to second floor, hall, lounge which is open plan with kitchen, bathroom and double bedroom with fitted wardrobes.

Early viewing advised - call 0151 9246000 to book your viewing



Communal Entrance

Hall

Lounge

Open plan with kitchen, wooden floor and double glazed floor to ceiling window

Kitchen

Open plan with lounge, a range of wall and base units, integrated appliances

Bedroom

Double bedroom, fitted wardrobes.

Bathroom

Shower, washing hand basin and w/c.

Energy Efficiency Rating		Current	Potential
Very energy efficient - lower running costs			
(92 plus) A			
(81-91) B			
(69-80) C			
(55-68) D			
(39-54) E			
(21-38) F			
(1-20) G			
Not energy efficient - higher running costs			
England & Wales		EU Directive 2002/91/EC	

Environmental Impact (CO ₂) Rating		Current	Potential
Very environmentally friendly - lower CO ₂ emissions			
(92 plus) A			
(81-91) B			
(69-80) C			
(55-68) D			
(39-54) E			
(21-38) F			
(1-20) G			
Not environmentally friendly - higher CO ₂ emissions			
England & Wales		EU Directive 2002/91/EC	

