

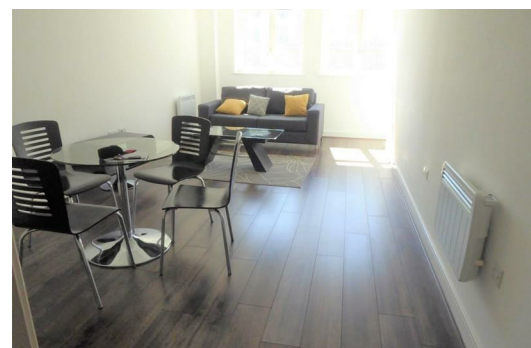


7 The Strand, Liverpool, Merseyside L2 0PP

Offers In Excess Of £130,000

One bedroom second floor apartment in the business district of Liverpool, with Stunning, uninterrupted views of the " Three Graces". The apartment is close to all amenities and briefly comprises of communal entrance with lift and intercom. Entrance, hall with utility, Open plan kitchen/lounge, double bedroom and a family bathroom.

To view call Berkeley Shaw on 01519246000



Hallway

13'5" x 3'3" (4.1 x 1.0)

Entry system, electric heater and laminate flooring

Living Room/Kitchen

24'11" x 10'5" (7.6 x 3.2)

Views towards the Liver Building, electric heater and laminate flooring Kitchen comprises of a range of fitted base and wall units, electric oven and hob and integrated fridge/ freezer single sink with mixer tap.

Bedroom

21'3" x 8'10" (6.5 x 2.7)

Window and electric heater

Bathroom

6'2" x 7'6" (1.9 x 2.3)

Panelled bath with shower over and glass shower screen, wall hung vanity unit with contemporary sink, W/C, electric heater part tiled walls and tiled flooring

Utility Room

4'7" x 6'2" (1.4 x 1.9)

