



Chandlers Wharf, 24 Cornhill, Liverpool, Merseyside L1 8DS

£1,100 PCM

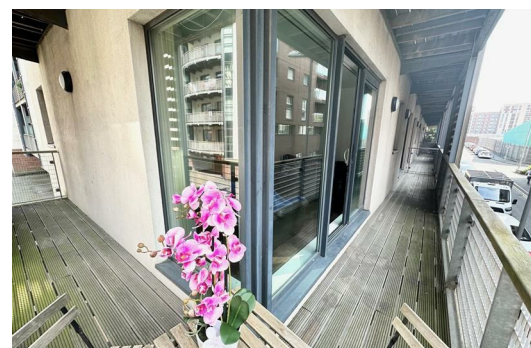
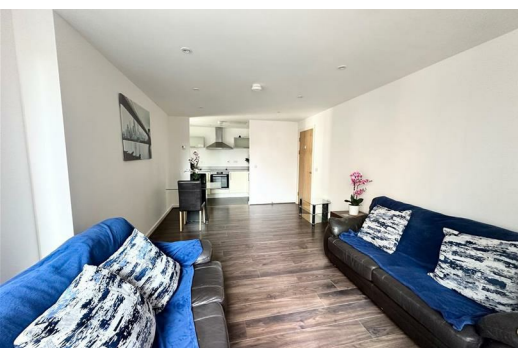
Berkeley Shaw are pleased to offer this FURNISHED two bedroom, two bathroom apartment located in the Baltic Triangle area of Liverpool City Centre. The property briefly comprises two bedrooms with en-suit to master and family bathroom, Open plan kitchen and lounge with access to a wrap around balcony to enjoy the sunny weather, the property is furnished to a high standard and includes all white goods. It's close to local amenities including shops, bars, and restaurants including the lavish nightlife that the Baltic Triangle has to offer!

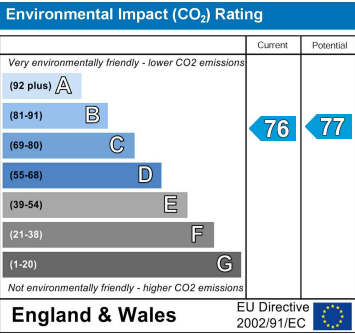
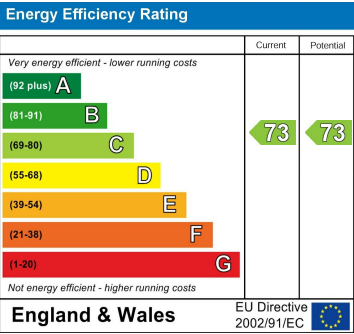
Ideally located close to local transport links and Liverpool Central station.

Deposit: £1,100.00

Council Tax: Band C

Tenancy Length: 12months





Berkeley Shaw Estate Agents Limited.
Company No. 0784754

Berkeley Shaw Real Estate Limited.
Company No. 05206927

