

Unity Building, 3 Rumford Place, Liverpool, Merseyside L3 9BZ

£1,100 PCM

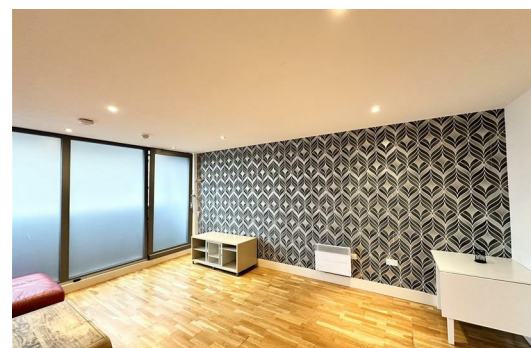
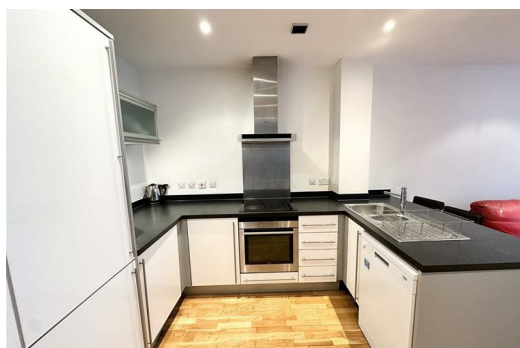
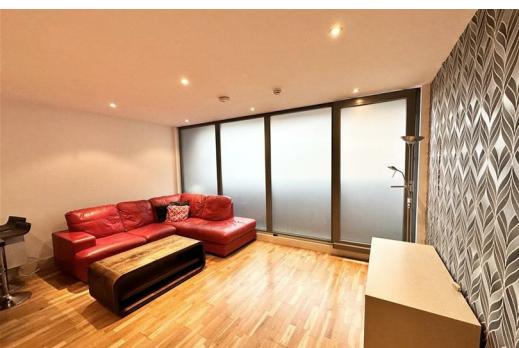
Berkeley Shaw we are pleased to offer this FURNISHED DUPLEX TWO BEDROOM apartment situated in the Unity Building. This property benefits double glazing, electric heating and integrated kitchen.

Apartment briefly comprises entrance hallway, Bedroom with Ensuite shower room, down stairs to inner hallway, open plan lounge kitchen, bathroom, bedroom and storage cupboard.

Viewing highly recommended to appreciate this apartment.

Parking is not included with this apartment.

Council Tax Band: D
Minimum term: 12 Months
Deposit: £1100.00



Hallway

wooden flooring, staircase to lower floor

Bedroom 1

Double glazed windows, carpet, electric wall heater, furnishings include double bed and mattress, wardrobes

Ensuite Shower Room

Fully tiled walls and flooring, walk in shower cubical with glass door, built in sink unit with low level W.C.

Inner Hallway

Staircase with wooden floor, Storage cupboard

Open Plan Lounge/ Kitchen

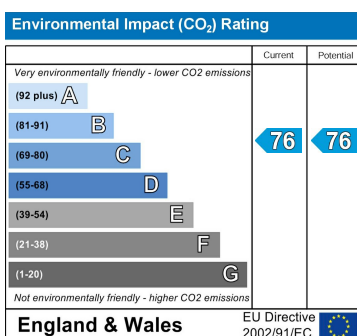
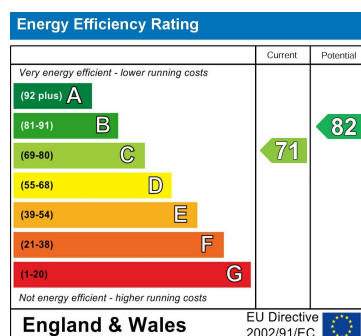
Double glazed sliding patio doors, wooden floor, electric wall heaters, kitchen comprises of a range of fitted base and wall units with integrated appliances. Furnishings include:- L shaped sofa, coffee table, dining table and 2 chairs, TV stand.

Bathroom

Fully tiled walls and floors, bath with shower over, Low level w.c. and sink

Bedroom 2

Double glazed windows, carpet, electric wall heater, furnishings include double bed and mattress, wardrobe, chest of drawers and bedside cabinet.



Berkeley Shaw Estate Agents Limited.
Company No. 0784754

Berkeley Shaw Real Estate Limited.
Company No. 05206927

