



62 Scarisbrick Drive, Liverpool, Merseyside L11 7DF

£995 PCM

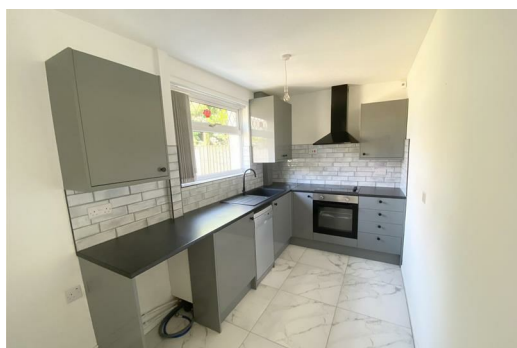
BERKELEY SHAW are pleased to offer TO LET this THREE BEDROOM SEMI- DETACHED property Briefly comprising of; entrance hallway, downstairs WC. Lounge, fully modernised high gloss kitchen with cooker and hob. to the first floor there are two double bedrooms and a third single bedroom along with a fully modernised Shower Room. Mature garden to the rear with large grassed area and mature planted borders.

Viewings Available please call 01519246000

Council Tax band: A

Deposit: £995

Rental Duration: minimum 6 months



Front Exterior

Flagged driveway with planted borders

Hallway

UPVC Double glazed entrance door, laminate flooring, radiator, carpet to staircase, understairs storage

Lounge

Double glazed window, laminate flooring, blinds, feature fireplace with wooden surround and inset gas fire (capped), meter cupboard housing fuse board.

Downstairs W.C.

Tiled walls and flooring, double glazed window, low level w.c. vanity sink with mixer tap

Kitchen

Double glazed windows, tiled floor, part tiled around work surfaces, kitchen comprises of a range of fitted base and wall units, electric oven and gas hob, extractor hood, space for fridge freezer, space for washing machine, slim line dishwasher, single drainer sink unit with mixer taps, boiler

Landing

Double glazed window, carpet

Bedroom 1

Double glazed window, laminate wood floor, blinds, radiator

Bedroom 2

Double glazed window, laminate wood floor, blinds, radiator

Bedroom 3

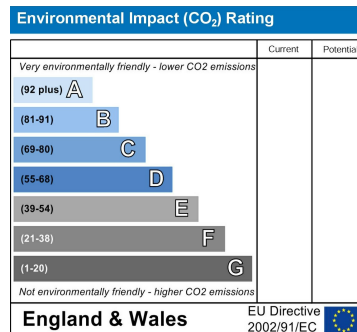
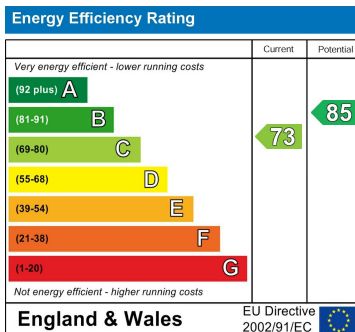
Double glazed window, laminate wood floor, blinds, radiator

Shower Room

Double glazed window, tiled flooring, fully tiled walls, shower cubical with combination shower, vanity sink unit, low level w.c.

Rear Exterior

fenced boarder, paved patio, large lawn area with mature planted borders, storage shed



Berkeley Shaw Estate Agents Limited.
Company No. 0784754

Berkeley Shaw Real Estate Limited.
Company No. 05206927

