

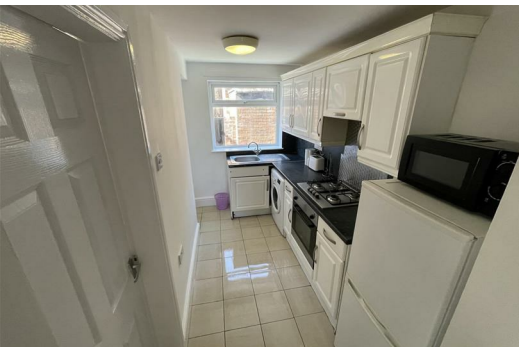
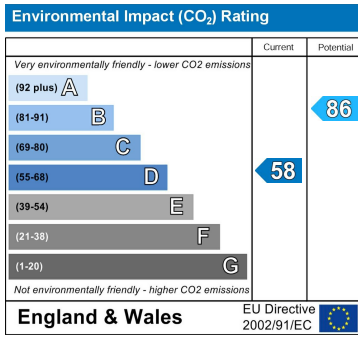
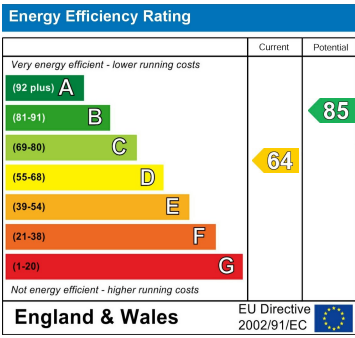


3 Battenberg Street, Liverpool, Merseyside L7 8RS

£800 PCM

Berkeley Shaw are pleased to offer this two bedroom house located within the popular garden suburb of Kensington Field which is within a short walking distance to the university and hospital district of the city centre. Offered furnished including sofas, kitchen appliances, beds, wardrobes and desks.





Berkeley Shaw Estate Agents Limited.
Company No. 0784754

Berkeley Shaw Real Estate Limited.
Company No. 05206927

