



Unity Building, 3 Rumford Place, Liverpool, Merseyside L3 9BZ

£795 PCM

Berkeley Shaw are pleased to offer this one bedroom furnished apartment in Unity Building, Liverpool. Albert Dock is within short walking distance from apartment and local transportation links are accessible throughout Liverpool City Centre.

The property benefits from 24 hour concierge desk, communal courtyard, resident's gymnasium and lift access to all floors.

Accommodation comprises of entrance hall, open plan living room, fully fitted kitchen, spacious bedroom and fully tiled bathroom and a good size balcony.

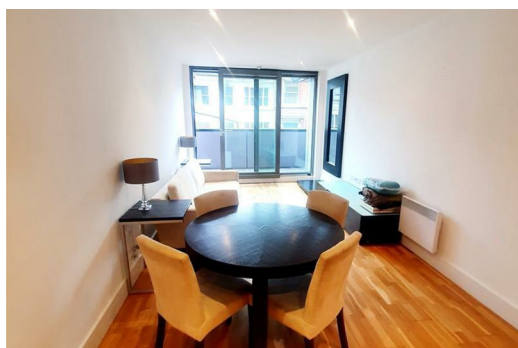
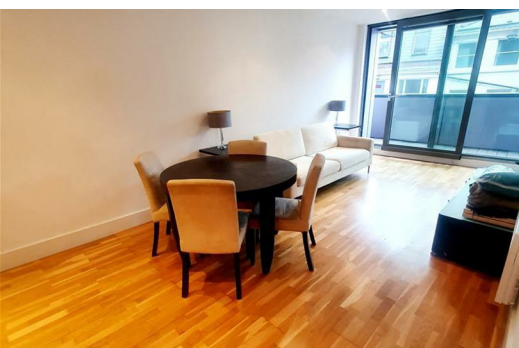
Please note, this apartment does not include parking.

Council Tax band: C

Deposit: £795

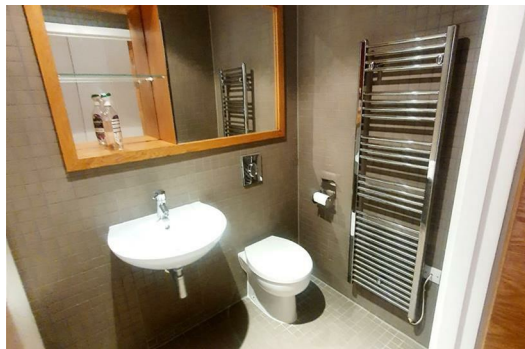
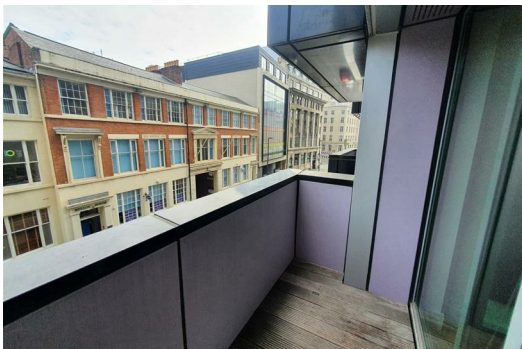
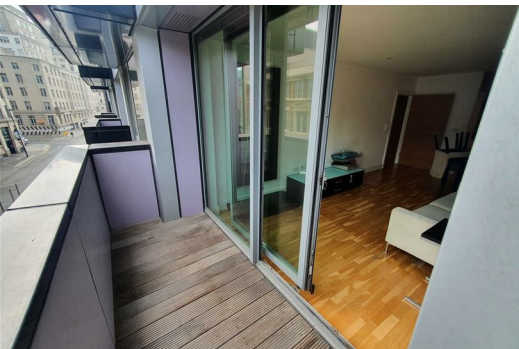
Rental Duration: minimum 6 months

Available from 20/02/2023



Energy Efficiency Rating		
	Current	Potential
Very energy efficient - lower running costs		
(92 plus) A		
(81-91) B	83	85
(69-80) C		
(55-68) D		
(39-54) E		
(21-38) F		
(1-20) G		
Not energy efficient - higher running costs		
England & Wales EU Directive 2002/91/EC		

Environmental Impact (CO ₂) Rating		
	Current	Potential
Very environmentally friendly - lower CO2 emissions		
(92 plus) A		
(81-91) B	79	80
(69-80) C		
(55-68) D		
(39-54) E		
(21-38) F		
(1-20) G		
Not environmentally friendly - higher CO2 emissions		
England & Wales EU Directive 2002/91/EC		



Berkeley Shaw Estate Agents Limited.
Company No. 0784754

Berkeley Shaw Real Estate Limited.
Company No. 05206927

