



644 Longmoor Lane, Liverpool, Merseyside L10 9LA

£650 PCM

Berkeley Shaw Estate Agents are pleased to offer a first floor THREE BEDROOM Apartment which offers a private entrance with stairs to the apartment. It has 3 double bedrooms, large lounge, fitted kitchen and a bathroom. The property benefits from double glazing and gas central heating.

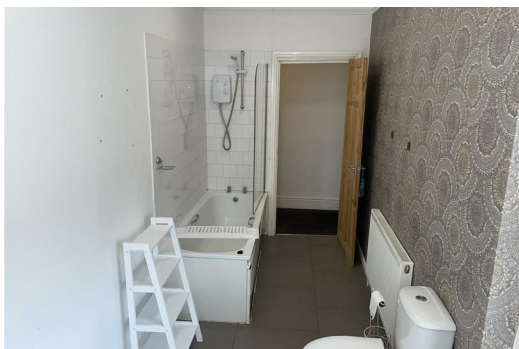
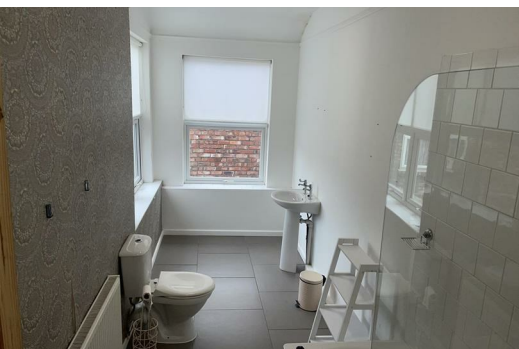
The property is situated near all local amenities and great transport links.

Viewing is highly recommended

Council Tax band: A

Deposit: £650

Rental Duration: minimum 6 months



KITCHEN

Fitted kitchen, oven and hob, fridge freezer, breakfast bar, stools, double glazed window and tiled flooring.

BATHROOM

Bath, Shower, toilet, radiator, double glazed window and tiled flooring.

BEDROOM 1

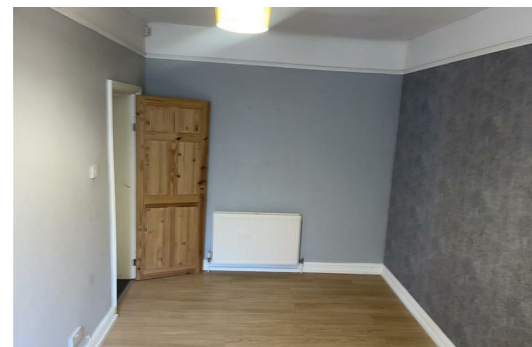
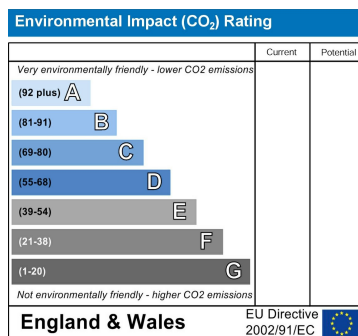
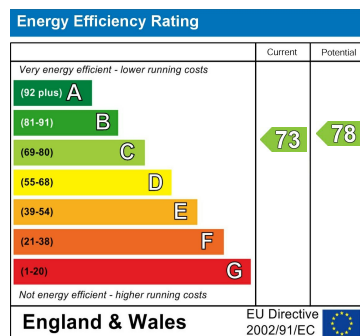
Laminate flooring, double glazed window and laminate flooring.

BEDROOM 2

Laminate flooring, double glazed window and radiator.

BEDROOM 3

Double wardrobe, chest of drawers, radiator and double glazed window.



Berkeley Shaw Estate Agents Limited.
Company No. 0784754

Berkeley Shaw Real Estate Limited.
Company No. 05206927

