



Portside House, 27-35 Duke Street, Liverpool, Merseyside L1 5AQ

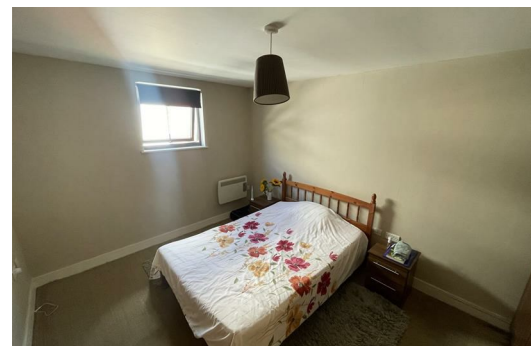
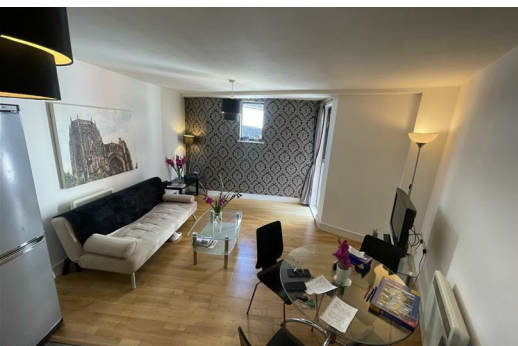
£750 PCM


Berkeley Shaw are pleased to offer to rent this one bedroom fully furnished apartment in Portside House. located in the heart of Liverpool City Centre and just a two minute walk from the Liverpool One shopping complex. The accommodation briefly comprises; entrance hall, living/dining room fully fitted kitchen, two bedrooms and a main bathroom.


Tenancy Term: 6months

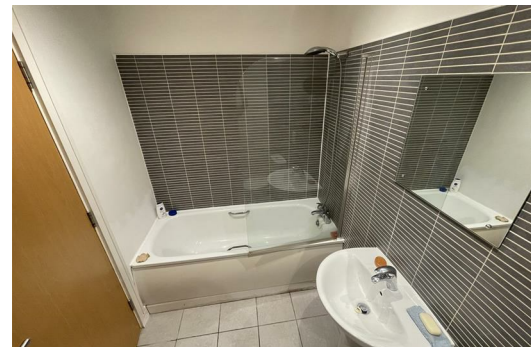
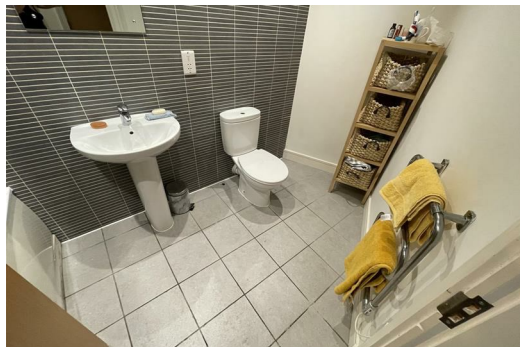
Council Tax: Band B

NO PARKING INCLUDED



Energy Efficiency Rating		
	Current	Potential
Very energy efficient - lower running costs		
(92 plus) A		
(81-91) B		
(69-80) C		
(55-68) D		
(39-54) E		
(21-38) F		
(1-20) G		
Not energy efficient - higher running costs		
	72	84
EU Directive 2002/91/EC 		

Environmental Impact (CO ₂) Rating		
	Current	Potential
Very environmentally friendly - lower CO ₂ emissions		
(92 plus) A		
(81-91) B		
(69-80) C		
(55-68) D		
(39-54) E		
(21-38) F		
(1-20) G		
Not environmentally friendly - higher CO ₂ emissions		
EU Directive 2002/91/EC 		



Berkeley Shaw Estate Agents Limited.
Company No. 0784754

Berkeley Shaw Real Estate Limited.
Company No. 05206927

