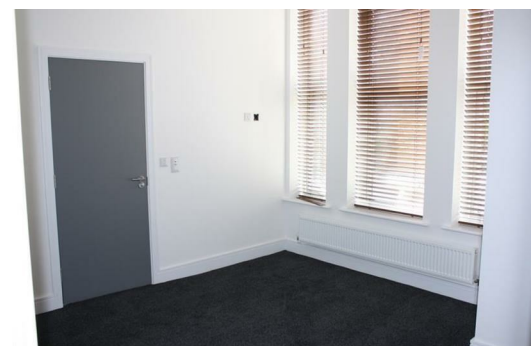


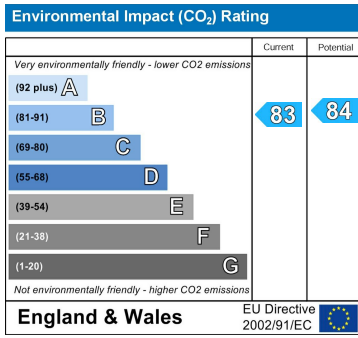
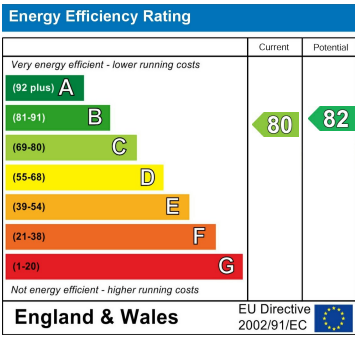


Lansdowne House 2 Blundellsands Road East, Liverpool, Merseyside L23 8SQ
£925 PCM

Berkeley Shaw are pleased to offer this 2 bedroom ground floor apartment located in a luxury converted complex. The property comprises of open plan lounge/kitchen, two bedrooms bathroom and en-suite. The property benefits from double glazing, gas central heating, fresh air system, telephone entry system, alarm system, carpets, blinds, locked storage area in basement and parking with CCTV. Available from 10th October 2022 call to arrange your viewings now on 01519246000

Tenancy Term: 6months
Council Tax: Band C





Berkeley Shaw Estate Agents Limited.
Company No. 0784754

Berkeley Shaw Real Estate Limited.
Company No. 05206927

