



## Waterloo Warehouse Waterloo Road, Liverpool, Merseyside L3 0BH

£1,300 PCM

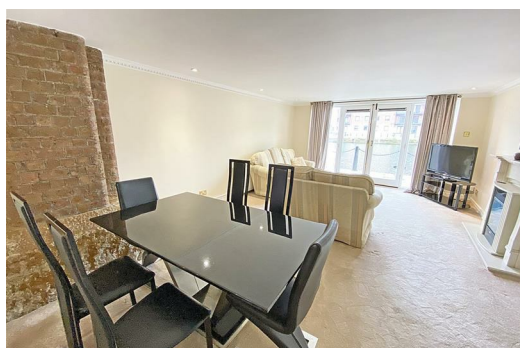
Fabulous 2 bedroom FURNISHED apartment with patios overlooking Waterloo Dock.

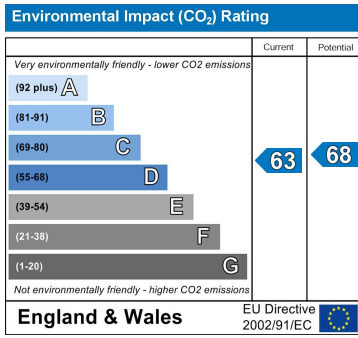
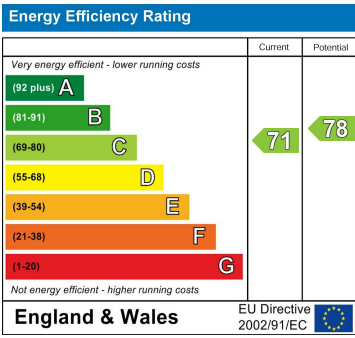
Named for the Battle of Waterloo, the dock was originally designed by Jesse Hartley and opened in 1834. Sympathetically converted to residential apartments in the early 80's, each apartment offers unique original features, seamlessly blending the old with the new. Within walking distance from local amenities and public transport links in to and out of the City Center.

Accommodation comprises:- Entrance hall, lounge with views of the dock and Mersey Basin, separate kitchen, two double bedrooms - the master with an en-suite.

Benefits include parking, on site security, electric heating, barrel ceilings to the bedrooms, double glazing & walk in storage cupboard.

Deposit: £1,300  
Minimum Contract: 12 months  
Council Tax Band: D





Berkeley Shaw Estate Agents Limited.  
Company No. 0784754

Berkeley Shaw Real Estate Limited.  
Company No. 05206927

