

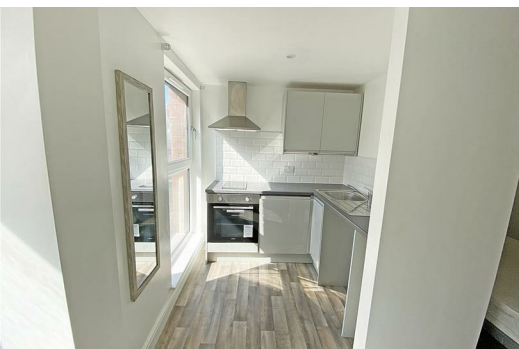
15 Wolstenholme Square, Liverpool, Merseyside L1 4JL

Starting Bids From £40,000

For Sale By Online Auction. Starting Bids £40,000. Terms and Conditions Apply.

Berkeley Shaw is pleased to offer this studio apartment in Wolstenholme Square, Liverpool. Local transport links are accessible throughout Liverpool City Centre.

Accommodation comprises of open plan living room, fully fitted kitchen, bedroom and fully tiled shower room.
Suitable for cash buyers only as no EWS1 certificate



Kitchen Area

7'2" x 5'10" (2.2 x 1.8)

Electric hob, electric oven, integrated fridge, stainless steel sink and extractor

Lounge and Bedroom Area, T shape

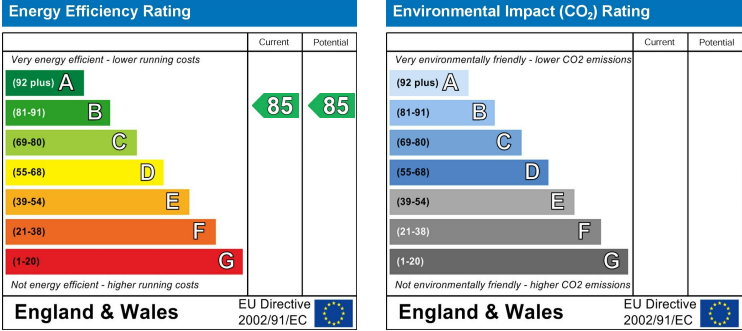
24'7" x 5'2" 7'2" x 7'10" (7.5 x 1.6 2.2 x 2.4)

Security access intercom, electric heater.

Shower Room

5'10" x 6'2" (1.8 x 1.9)

Shower cubicle, hot water tank, concealed WC, wall-mounted sink



Berkeley Shaw Estate Agents Limited.
Company No. 0784754

Berkeley Shaw Real Estate Limited.
Company No. 05206927

