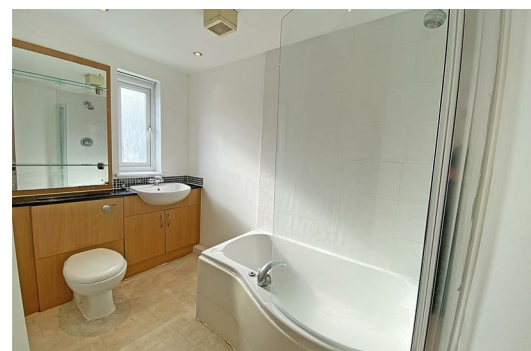




172 Ellerman Road, Liverpool, Merseyside L3 4FE

£225,000

We are thrilled to bring to the market this spacious and unique three-bedroom second-floor duplex apartment with fantastic views. The property is in a gated development with designated parking space, close to the promenade, leisure centres and Liverpool city centre and is conveniently positioned for transport links including Brunswick Station. The property has an open-plan, double-aspect lounge and kitchen with 2 balconies. There are also three generous bedrooms. The property is centrally heated and double-glazed throughout. To View Call Us today...



Communal Entrance

Entrance Hall

13'9" x 6'6" (4.2 x 2.0)

Radiator, high-quality luxury vinyl flooring

Lounge

19'8" x 18'4" (6.0 x 5.6)

Open plan with kitchen, double-glazed window and doors to 2x balconies. 2x radiators, storage cupboard and high-quality luxury vinyl flooring

Kitchen

7'6" x 11'9" (2.3 x 3.6)

Fitted kitchen, open plan with lounge, A range of wall and base units, and integrated appliances. Oven and hob with extractor and high-quality luxury vinyl flooring

Bedroom 1 Master bedroom with dressing room

13'9" x 13'1" 4'11" x6'10" (4.2 x 4.0 1.5 x2.1)

Radiator and double-glazed window and balcony, high-quality luxury vinyl flooring

Master Bedroom ensuite

6'10" x 5'2" (2.1 x 1.6)

Shower cubicle, tiles floor, wash basin, low level wc, radiator.

Master Bedroom storage cupboard

2'7" x 3'7" (0.8 x 1.1)

Bedroom 2

11'1" x 11'9" (3.4 x 3.6)

Double bedroom, radiator, high-quality luxury vinyl flooring

bedroom 3

11'1" x 9'2" (3.4 x 2.8)

Radiator, high-quality luxury vinyl flooring

Family Bathroom

10'5" x 7'6" (3.2 x 2.3)

Concealed WC, vanity unit, bath with shower over.

