



118 Moore Street, Liverpool, Merseyside L20 4PL

£775 PCM

Berkeley Shaw would like to offer TO LET a delightfully and extensively renovated THREE bedroom family home provides excellent living space completed to a high standard with quality fitments and tasteful décor throughout.

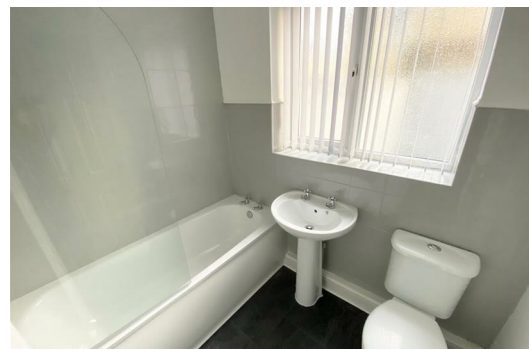
The property comprises of entrance hallway, lounge, dining room, fitted kitchen and a small utility area. The kitchen comprises of fitted base and wall units with contrasting work surfaces and built in appliances. The bathroom is fully tiled with a three piece suite comprising low level wc, pedestal wash hand basin and a panelled bath with shower over.

The first floor includes three bedrooms two of which are double, a single third bedroom.

Outside to the rear is a walled garden featuring artificial lawn.

The property benefits from being close to local amenities and excellent transport links being ideally situated with great links to Liverpool.

Council Tax Band: A
Minimum Lease Length: 6 months
Deposit: 775



Hallway

UPVC Double glazed door, laminate flooring, radiator, staircase to first floor

Through Lounge Dining Room

UPVC Double glazed windows, Laminate flooring, radiators, 2 x meter cupboards

Kitchen

UPVC Double glazed window, 1 x UPVC Double glazed exterior door, tiled floor kitchen comprises of fitted base and wall units with stainless steel sink with mixer taps, integrated oven and hob, extractor hood, plumbing for washing machine.

Bathroom

UPVC Double glazed window, tiled walls, three piece suite comprising of pannelled bath with shower over, sink and low level w.c. shower screen.

Landing

Carpet

Bedroom 1

Double glazed windows, radiator and carpet

Bedroom 2

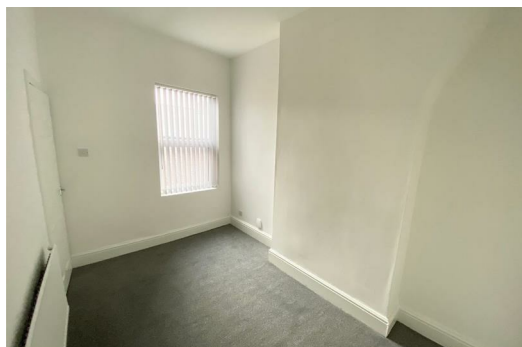
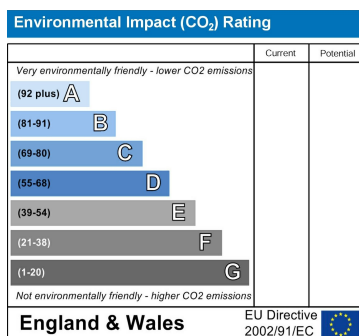
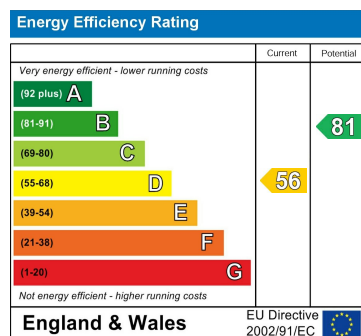
Double glazed windows, radiator and carpet

Bedroom 3

Double glazed windows, radiator and carpet

Rear Exterior

Walled boundary, artificial grass.



Berkeley Shaw Estate Agents Limited.
Company No. 0784754

Berkeley Shaw Real Estate Limited.
Company No. 05206927

