



**Park Central, 11 Jesse Hartley Way, Liverpool, Merseyside L3 0AZ**  
**£150,000**

We are pleased to offer this one-bedroom tenth-floor apartment with stunning views, situated in a popular development with views across the river Mersey. This fantastic apartment is located within the "10 streets project" region, giving any buyer, many things to get excited about for the future. The property comprises; a communal intercom entrance, communal hall, Hall, lounge, kitchen and bathroom.

Early viewing advised, call 01519246000 to view





**Hallway**  
6'10" x 4'3" (2.1 x 1.3)  
Wood floor

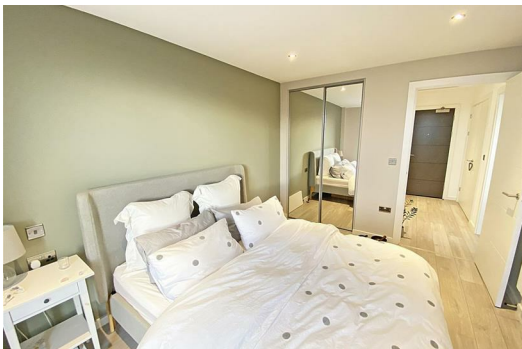
**Open Plan Lounge Kitchen**  
9'10" x 23'3" (3.0 x 7.1)  
Built-in electric hob, fridge, freezer, stainless steel sink, electric radiator, wooden floor, floor-to-ceiling double-glazed windows.

**Bedroom**  
13'9" x 9'2" (4.2 x 2.8)  
laminate floor, fitted wardrobes, electric radiator and floor-to-ceiling double-glazed windows.

**Shower Room**  
6'10" x 4'7" (2.1 x 1.4)  
Concealed WC, wall-mounted sink, walk-in shower, floor-to-ceiling tiles and towel radiator.

**Storage Utility Room**  
5'10" x 2'3" (1.8 x 0.7)

Energy Efficiency Rating			Environmental Impact (CO <sub>2</sub> ) Rating		
	Current	Potential		Current	Potential
Very energy efficient - lower running costs			Very environmentally friendly - lower CO <sub>2</sub> emissions		
(92 plus) A			(92 plus) A		
(81-91) B			(81-91) B		
(69-80) C			(69-80) C		
(55-68) D			(55-68) D		
(39-54) E			(39-54) E		
(21-38) F			(21-38) F		
(1-20) G			(1-20) G		
Not energy efficient - higher running costs			Not environmentally friendly - higher CO <sub>2</sub> emissions		
England & Wales	EU Directive 2002/91/EC		England & Wales	EU Directive 2002/91/EC	



Berkeley Shaw Estate Agents Limited.  
Company No. 0784754

Berkeley Shaw Real Estate Limited.  
Company No. 05206927

