



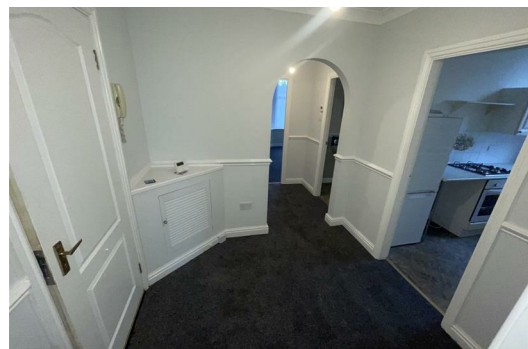
Flat 1, 52 Park Road, Southport, PR9 9JB
£650 PCM

Berkeley Shaw are pleased to offer to let this well presented one bedroom refurbished flat located close to Southport town centre. The apartment briefly comprises of: spacious hallway, one double bedroom, spacious lounge area separate kitchen and a fitted bathroom. The property also benefits from off street parking.

Council Tax Band B

Deposit Amount £695

Minimum 6 Months Tenancy



Energy Efficiency Rating		
	Current	Potential
Very energy efficient - lower running costs		
(92 plus) A		
(81-91) B		
(69-80) C		
(55-68) D		
(39-54) E		
(21-38) F		
(1-20) G		
Not energy efficient - higher running costs		
England & Wales		EU Directive 2002/91/EC

Environmental Impact (CO ₂) Rating		
	Current	Potential
Very environmentally friendly - lower CO2 emissions		
(92 plus) A		
(81-91) B		
(69-80) C		
(55-68) D		
(39-54) E		
(21-38) F		
(1-20) G		
Not environmentally friendly - higher CO2 emissions		
England & Wales		EU Directive 2002/91/EC



Berkeley Shaw Estate Agents Limited.
Company No. 0784754

Berkeley Shaw Real Estate Limited.
Company No. 05206927

