



## 7 Francine Close, Liverpool, Merseyside L3 6LN

£700 PCM

Berkeley Shaw are please to offer this well presented 2 BEDROOM FIRST FLOOR unfurnished apartment. This property briefly comprises of hallway, lounge, kitchen, 2 bedrooms and a bathroom.

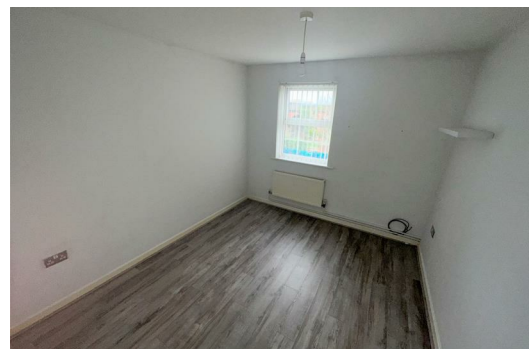
On Site Parking


Viewings are highly recommended as this property is in a sought after location in L3 not far from the city centre.


Council Tax band: B

Deposit: £700

Rental Duration: minimum 6 months



Energy Efficiency Rating		
	Current	Potential
Very energy efficient - lower running costs		
(92 plus) <b>A</b>		
(81-91) <b>B</b>		
(69-80) <b>C</b>		
(55-68) <b>D</b>		
(39-54) <b>E</b>		
(21-38) <b>F</b>		
(1-20) <b>G</b>		
Not energy efficient - higher running costs		
England & Wales EU Directive 2002/91/EC 		

Environmental Impact (CO <sub>2</sub> ) Rating		
	Current	Potential
Very environmentally friendly - lower CO <sub>2</sub> emissions		
(92 plus) <b>A</b>		
(81-91) <b>B</b>		
(69-80) <b>C</b>		
(55-68) <b>D</b>		
(39-54) <b>E</b>		
(21-38) <b>F</b>		
(1-20) <b>G</b>		
Not environmentally friendly - higher CO <sub>2</sub> emissions		
England & Wales EU Directive 2002/91/EC 		



Berkeley Shaw Estate Agents Limited.  
Company No. 0784754

Berkeley Shaw Real Estate Limited.  
Company No. 05206927

