



## City Quay Ellerman Road, Liverpool, Merseyside L3 4FH

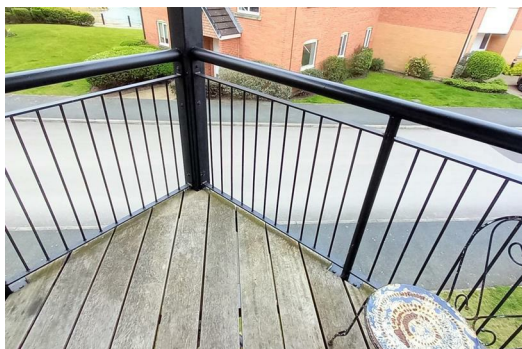
**£800 PCM**

Situated five minutes from the city center and just two minutes from Brunswick railway station, the location is perfect for professionals and the property itself forms part of an exclusive secure development which has allocated parking, communal parking and vegetable garden.

Inside, this attractive upper floor corner property, which is one of the larger two bedroom apartments, comprises an extensive open plan living area with balcony, fully fitted kitchen, two double bedrooms and contemporary bathroom with P shaped bath.

The apartment has views over the river and benefits include car parking, video entry phone, electronic gates & dishwasher.

Viewing at the earliest opportunity is recommended.



## Hallway

Carpet, door entry, walk in storage cupboard

## Lounge / Kitchen

Double glazed french doors to balcony, double radiator, carpet in lounge area, furnishings include sofa, arm chair, coffee table, tv table, kitchen comprised of a range of fitted base and wall units with integrated appliances including fridge freezer, washing machine, electric oven, hob extractor hood.

## Bedroom 1

Double glazed windows, Radiators, carpet furnishings include, Double bed, mattress, chest of drawers, wardrobe, bedside tables, dressing table.

## Bathroom

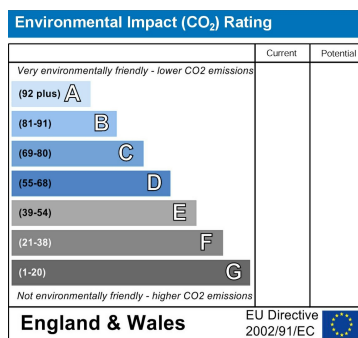
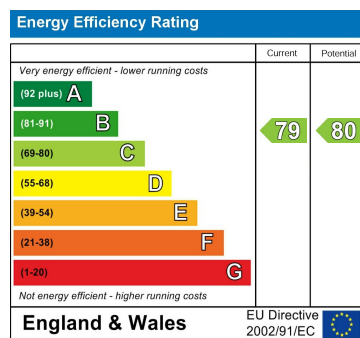
Fully tiled, panelled Pshaped bath with shower over, shower screen, vanity sink unit, low level w.c. mirror

## Bedroom 2

Double glazed windows. radiator, carpet furnishing includes double bed with bedside cabinets, chest of drawers, wardrobe.

## Exterior

Balcony off lounge and allocated parking space



Berkeley Shaw Estate Agents Limited.  
Company No. 0784754

Berkeley Shaw Real Estate Limited.  
Company No. 05206927

