



The Collegiate, 20 Shaw Street, Liverpool, Merseyside L6 1HA

Offers In Excess Of £165,000

Are you looking to take your first step onto the property ladder or searching for an apartment with easy access into Liverpool City Centre?

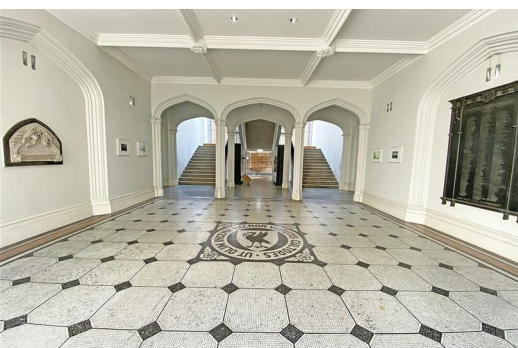
Berkeley Shaw are the appointed agents for this fantastic two-bedroom duplex apartment. Situated in the grand 'Collegiate Building', this good-sized apartment is bound to be popular with a range of buyers. Accessed via the communal entrance hall with both stair and lift access, the apartment can be entered via the third or fourth floor.

The accommodation briefly comprises; inviting entrance hall with storage cupboard, fantastic open plan kitchen/living area boast a range of integrated appliances, central island and utility space. This is the perfect space for entertaining guests and is flooded with natural light via the generous double-glazed sliding doors. From here you access a real wow feature of the apartment, the balcony offers stunning views out across Liverpool and is the perfect space for taking in the sunshine.

The lower floor is two generously sized bedrooms, the master bedroom boasts a walk-in wardrobe and a three-piece bathroom.

The property further benefits from secure parking and can be offered for sale with no onward chain.

Viewing is strongly encouraged to appreciate all this apartment has to offer.



Upper floor entrance hall

Wooden floor, storage cupboard, access to kitchen/living room, & stairs to lower floor

Open plan kitchen/living room

18'0" x 18'9" (5.49 x 5.72)

Fitted kitchen with gloss units, four ring induction hob, electric oven, centre island, wooden floor, stair to raised living living space, wooden floor, 2 x storage heaters, intercom entry system, double glazed windows and sliding doors leading to balcony

Utility area

Space for fridge freezer and washing machine

Lower floor entrance hall

Ample storage areas, water tank & access to bedrooms and bathroom

Bedroom 1

9'4" x 15'7" (2.86 x 4.77)

Laminate floor, double glazed window, 2 x electric heaters and walk in wardrobe

Bedroom 2

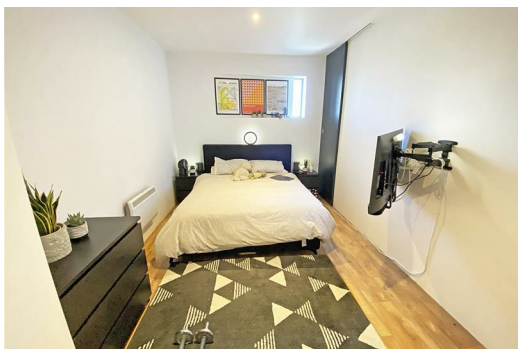
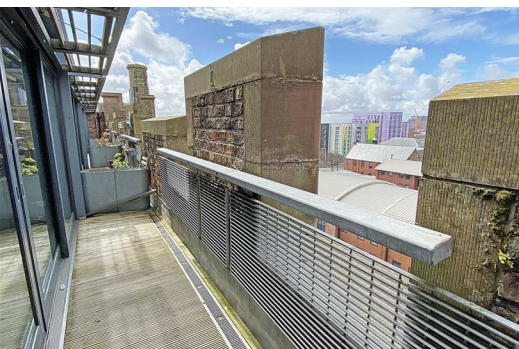
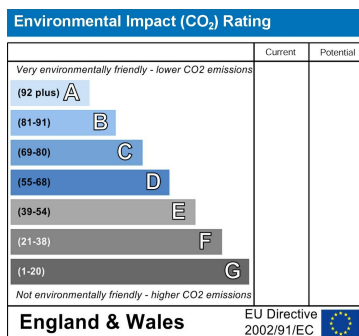
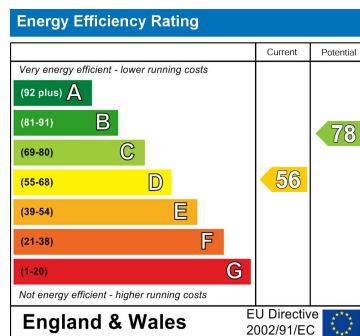
8'1" x 11'3" (2.48 x 3.44)

double glazed window, sliding door providing access to bedroom 1, electric heater

Bathroom

6'9" x 5'7" (2.08 x 1.71)

Tiled floor, partially tiled walls, Wc, basing, bath with shower attachment



Berkeley Shaw Estate Agents Limited.
Company No. 0784754

Berkeley Shaw Real Estate Limited.
Company No. 05206927

