



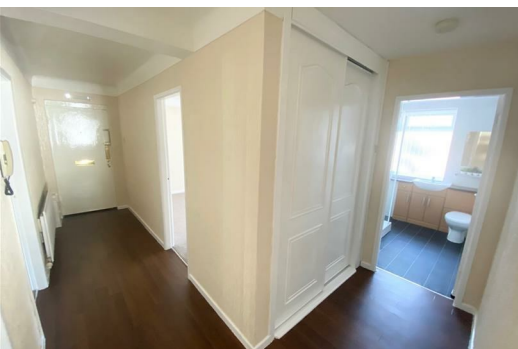
## Linkside Court Richard Road, Liverpool, Merseyside L23 8TF

### £950 PCM

Berkeley Shaw are delighted to offer this fantastic REFURBISHED GROUND FLOOR spacious two bedroom apartment in the heart of Blundellsands. Linkside Court is a short walk to Crosby Beach at the Coastguard Station. Spacious ground floor accommodation comprises of; Hallway, lounge, kitchen diner, two spacious bedrooms and a modern shower room. Single Garage, Communal parking and gardens.

Viewings are highly recommended please contact 01519246000

Council Tax: Band: C  
Deposit: £995  
Tenancy Term: 12 months





## Hallway

Entrance Door, Carpet, Large Storage Cupboard

## Lounge

UPVC Double glazed window, radiator, carpet

## Kitchen Diner

UPVC Double glazed windows, radiator, laminate flooring, kitchen comprises of a range of fitted base and wall units with sink unit with mixer taps, appliances include fridge, freezer, washing machine, cooker, hob and extractor fan.

## Shower Room

UPVC Double glazed window, panelled walls, lino flooring, radiator, ladder towel rail large walkin shower with glass surround, vanity sink unit and low level w.c.

## Bedroom 1

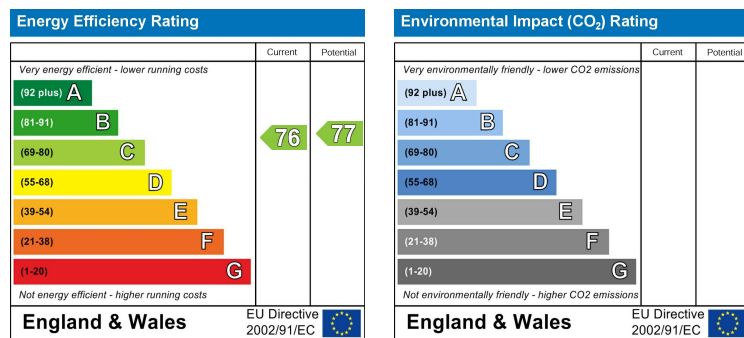
UPVC Double glazed window, radiator, carpet and fitted wardrobes.

## Bedroom 2

UPVC Double glazed window, radiator, carpet

## Garage

Single garage with up and over door



Berkeley Shaw Estate Agents Limited.  
Company No. 0784754

Berkeley Shaw Real Estate Limited.  
Company No. 05206927

