



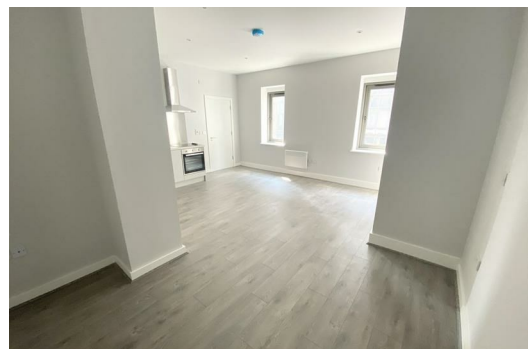
## Sky Gardens, 16 Crosby Road North, Liverpool, Merseyside L22 0AD

**£650 PCM**

LUXURY - STUNNING - DELUXE - COMFORTABLE are a few words to Describe the newest Development to come on the RENTAL market SKY GARDENS is set in the heart of one of Liverpool's most affluent suburbs. This FIRST FLOOR UNFURNISHED STUDIO Apartment .The Development is within minutes of Crosby Beach, these beautifully-appointed apartments are designed for professionals working in the city, but looking for a relaxed coastal lifestyle. Crosby Beach is home to Sir Antony Gormley's iconic art installation, 'Another Place'.

Crosby was recently named by 'The Sunday Times' as one of the top 5 places to live in the North West and is popular with sports stars and celebrities. Sky Gardens complete with concierge, integrated appliances, and optional on-site parking. (t&c apply)

Council Tax: Not yet Banded New Build  
Deposit: £650  
Minimum Term: 12 Months



Lounge/ Kitchen / Bedroom

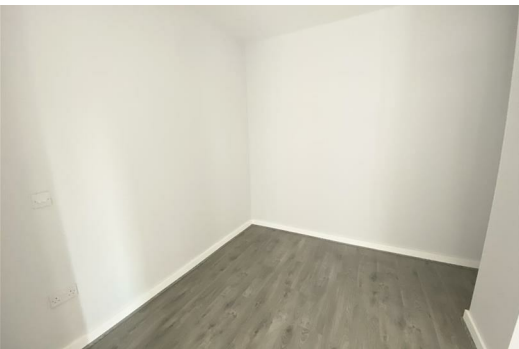
17'7" x 17'7" (5.37 x 5.36)

2 x Double glazed windows, 1 x electric wall heater, laminate flooring, kitchen comprises of a range of fitted base and wall units with single stainless steel sink unit with mixer tap, under counter fridge with icebox, washer dryer, cooker and hob, extractor hood.

Shower Room

Part tiled, large shower base, glass enclosure, sink, low level w.c. heated towel rail, double glazed window

Energy Efficiency Rating			Environmental Impact (CO <sub>2</sub> ) Rating		
	Current	Potential		Current	Potential
Very energy efficient - lower running costs			Very environmentally friendly - lower CO <sub>2</sub> emissions		
(92 plus) A			(92 plus) A		
(81-91) B			(81-91) B		
(69-80) C			(69-80) C		
(55-68) D			(55-68) D		
(39-54) E			(39-54) E		
(21-38) F			(21-38) F		
(1-20) G			(1-20) G		
Not energy efficient - higher running costs			Not environmentally friendly - higher CO <sub>2</sub> emissions		
England & Wales	EU Directive 2002/91/EC		England & Wales	EU Directive 2002/91/EC	



Berkeley Shaw Estate Agents Limited.  
Company No. 0784754

Berkeley Shaw Real Estate Limited.  
Company No. 05206927

