



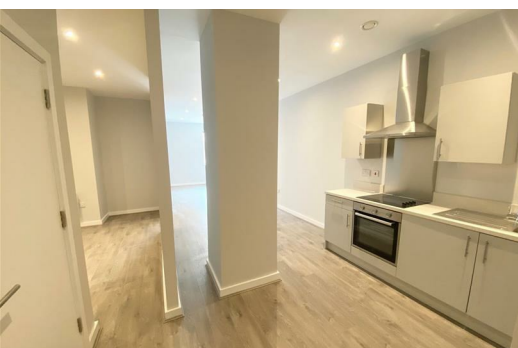
Sky Gardens, 16 Crosby Road North, Liverpool, L22 0AD

£875 PCM

Sky Gardens is a stunning residential development set in the heart of one of Liverpool's most affluent suburbs. Berkeley Shaw Real Estate are proud to offer this ONE BEDROOM plus GROUND FLOOR UNFURNISHED apartment. This apartment has open plan lounge/kitchen, bedroom, second reception/ study and shower room. The development is within minutes of Crosby Beach, these beautifully-appointed apartments are designed for professionals working in the city, but looking for a relaxed coastal lifestyle.

Crosby was recently named by 'The Sunday Times' as one of the top 5 places to live in the North West- Minimum 12 months and is popular with sports stars and celebrities. Crosby Gardens complete with concierge, integrated appliances, and optional on-site car parking * Subject to Availability and Charges.

Council Tax Band: A
Deposit: £1,010.00
Minimum Term: 12 Months



Open Plan Lounge / Kitchen

Double glazed window, electric wall heater, laminate flooring, kitchen comprises of a range of fitted wall and base units, work surfaces, stainless steel sink with mixer tap, integrated appliances include fridge/ freezer, electric oven, electric hob, extractor hood, washer dryer

Reception 2 / Study

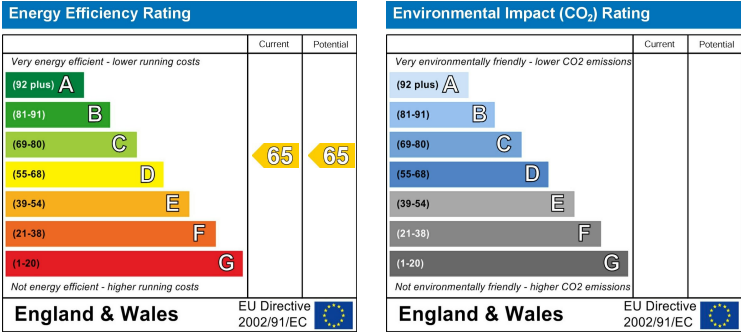
Laminate flooring, electric wall heater

Bedroom 1

Double glazed window, laminate flooring, electric wall heater

Shower Room

Part tiled walls, large wall mirror, walk in shower cubical with glass screen and door, electric shower, low level w.c. sink electric ladder towel rail.



Berkeley Shaw Estate Agents Limited.
Company No. 0784754

Berkeley Shaw Real Estate Limited.
Company No. 05206927

