



2 Park Terrace, Liverpool, Merseyside L22 3XB

£1,050 PCM

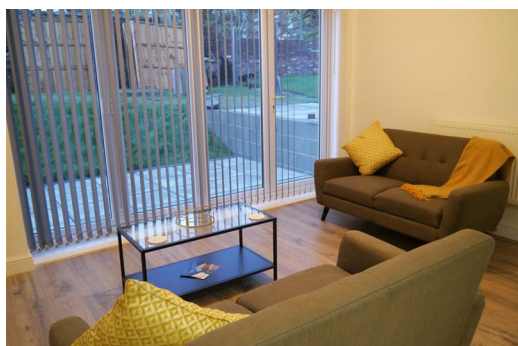
Park Terrace is a new conversion of a beautiful character property in this highly sought after area of Liverpool's northern suburbs. This Victorian Terrace consists of two and three bed apartments, benefitting from high ceilings and large windows flooding the rooms with natural light.

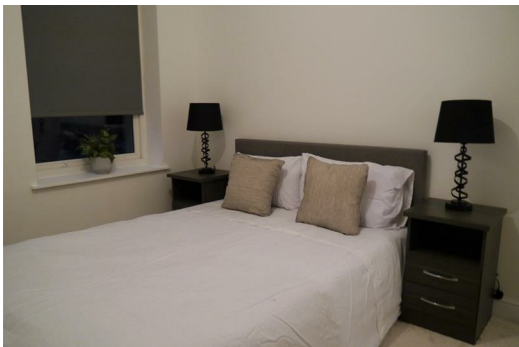
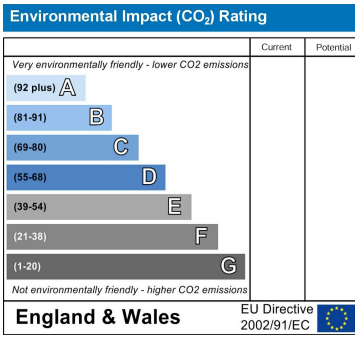
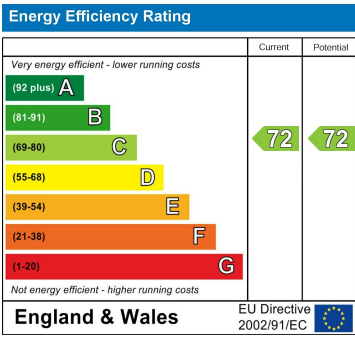
This spacious ground floor apartment benefits from large bi-folding doors opening onto a generous south facing private garden with a large patio and lawned area. The apartment is furnished with high quality furniture, equipped with high quality appliances, and also benefit from residents parking to the front of the property.

Early viewing is recommended to avoid missing out on these impressive properties.

Please be aware that pictures may be of the show apartment and actual layouts may vary, please enquire for full details.

Deposit £1211
Council Tax - Not Yet Banded
Minimum Term 12Months





Berkeley Shaw Estate Agents Limited.
Company No. 0784754

Berkeley Shaw Real Estate Limited.
Company No. 05206927

