



2 Neptune Place Grafton Street, Liverpool, Merseyside L8 5AH

£1,100 PCM

Berkeley Shaw are pleased to offer this high specification TWO BEDROOM FURNISHED, luxury apartment located in the exclusive NEW DEVELOPMENT NEPTUNE PLACE.

The complex boasts a number of benefits for residents, including a concierge, lifts access, the property comprises entrance hall, spacious open plan Kitchen living/dining area, fully fitted and integrated kitchen, two double bedrooms and bathroom.

An early inspection of this wonderful home is recommended in order to not miss out on a fantastic opportunity.

Deposit: £1100
Council Tax Band
Minimum term 12 months



Hallway

Entrance door, laminate flooring, wall panel heater, walk in storage cupboard with washer/ dryer and water cylinder

Open Plan Lounge/ Kitchen

Double glazed windows, blinds, laminate flooring, electric wall heater, kitchen comprises of a range of high gloss base and wall units, granite surfaces and inset sink with mixer taps, integrated appliances include, fridge / freezer, oven and hob. Other furnishings include - Microwave, dining table and chairs, couches and chair, coffee table, tv stand, tv, rug and cushions.

Bedroom 1

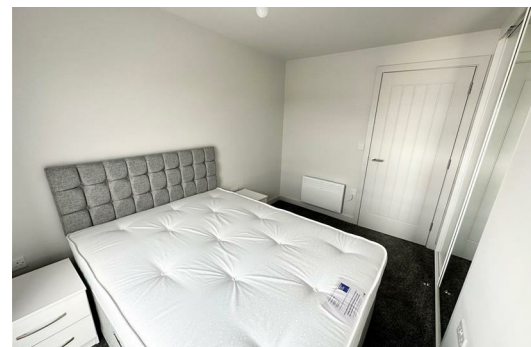
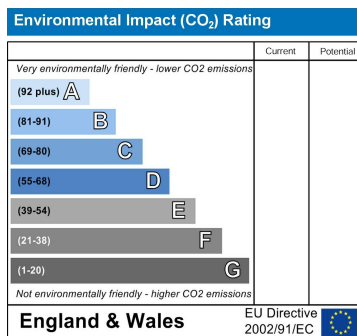
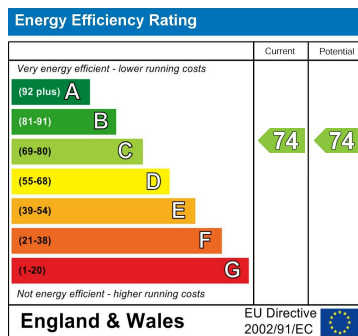
Double glazed windows, blinds, electric wall heater, carpet, fitted wardrobe with sliding doors, double bed and mattress, two x bedside cabinets

Bedroom 2

Double glazed windows, blinds, electric wall heater, carpet, fitted wardrobe with sliding doors, double bed and mattress, two x bedside cabinets

Bathroom

Fully tiled wall and flooring, bath with shower over, low level w.c. vanity sink with drawers below.



Berkeley Shaw Estate Agents Limited.
Company No. 0784754

Berkeley Shaw Real Estate Limited.
Company No. 05206927

