



9 Balfe Street, Liverpool, Merseyside L21 4NR

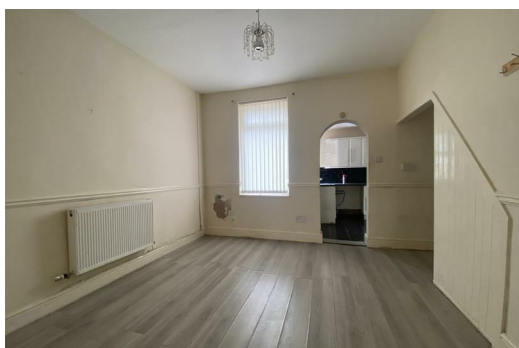
Offers Over £80,000

If you want to take your first step onto the property ladder or are looking for an ideal buy-to-let opportunity, this two-bedroom mid-terrace could be the perfect buy for you!

Berkeley Shaw is the appointed agent for this fantastic opportunity set on Balfe Street L21. The surrounding area offers a variety of amenities with a range of shops, schooling and excellent transport links giving easy access into the City Centre and surrounding areas.

Set out across two floors, the accommodation briefly comprises; entrance hall leading to a living room with an open aspect through to the rear dining room. Completing the ground floor layout is a fitted kitchen. The first floor provides two double bedrooms and a three-piece bathroom. Externally, the property boasts a walled and gated rear yard. Further benefits to the property include gas central heating, double glazing and no onward chain.

Get in touch straight away to arrange a viewing before this is snapped up!



Laminate floor & stairs to upper floor.

Laminate floor, double glazed window & radiator.

Laminate floor, double glazed window & radiator.

Double glazed window, stainless steel sink with drainer, range of wall & base units, electric hob, electric oven & extractor hood.

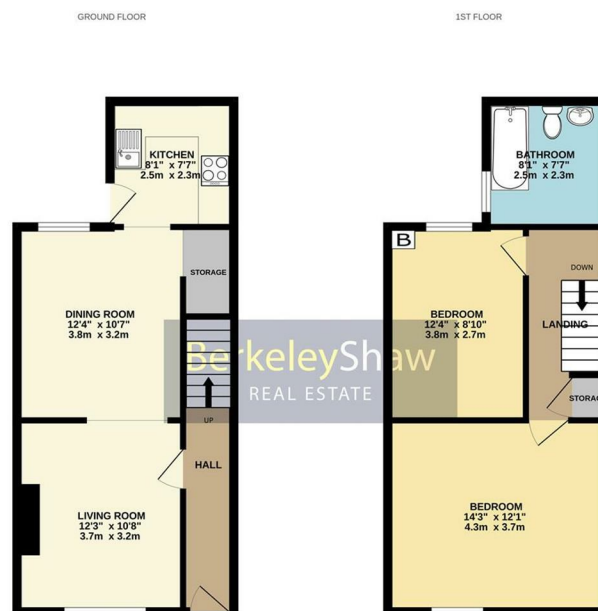
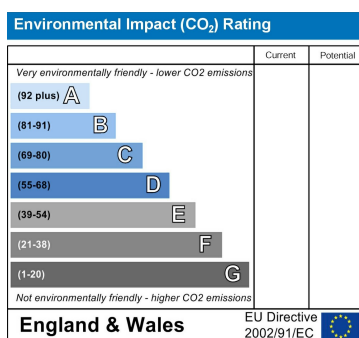
Loft access & storage cupboard.

Double glazed window & radiator.

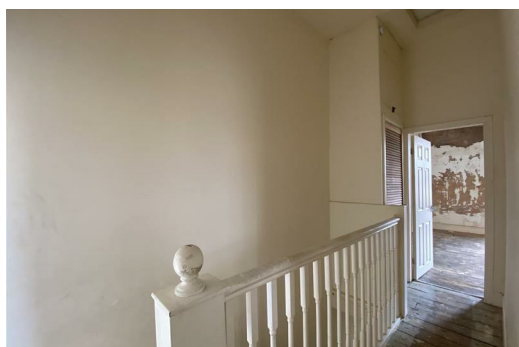
Double glazed window, combi boiler & radiator.

WC, basin, bath, double glazed window, radiator & part tiled walls.

Walled and gated rear yard.



Whilst every attempt has been made to ensure the accuracy of the floorplan contained here, measurements of doors, windows, rooms and any other items are approximate and no responsibility is taken for any error, omission or mis-statement. This plan is for illustrative purposes only and should be used as such by any prospective purchaser. The services, systems and appliances shown have not been tested and no guarantee is made as to their operability or efficiency can be given.



Berkeley Shaw Real Estate Limited.
Company No. 05206927

