



4 Park Terrace, Liverpool, L22 3XB

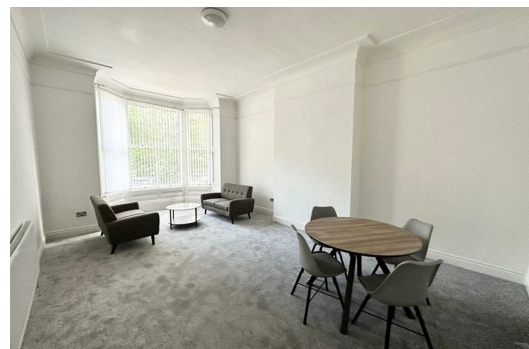
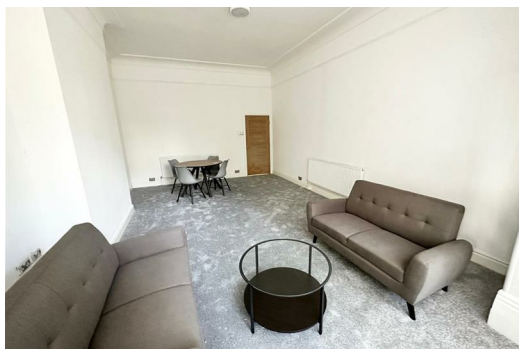
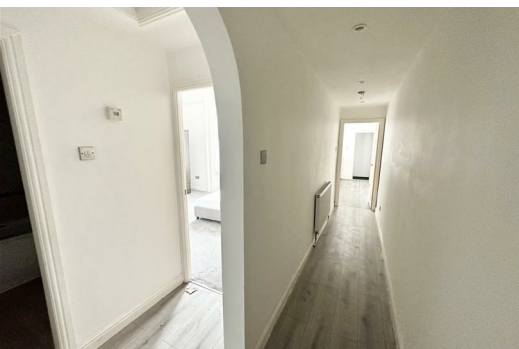
£800 PCM

Berkeley Shaw our please to offer TO LET GROUND FLOOR FURNISHED APARTMENT in Park Terrace. This apartment is within a character property in this highly sought after area of Waterloo. This Victorian Terrace consists of one and two bed apartments, benefitting from high ceilings and large windows flooding the rooms with natural light.

This GROUND FLOOR one bed apartment is offered furnished and the kitchen also includes integrated Electric Cooker and Hob. Tenants will also have access to the private garden space.

Early viewing is recommended to avoid missing out on this apartment.

Deposit: £980.00
Council Tax Band: TBC
Minimum Tenancy: 12 months



Hallway

Entrance door, laminate flooring, radiator

Lounge / Dining Room

Double glazed bay windows, blinds, radiator, carpet furnishings include 2 x couches, coffee table dining table and chairs.

Kitchen

1 x Double glazed window, 1 x single glazed window, lino, range of fitted base units stainless steel sink with mixer tap, wall shelves, 1 x oven and hob, extractor hood

Utility Area

Plumbing for washing machine, PVC external door

Bedroom 1

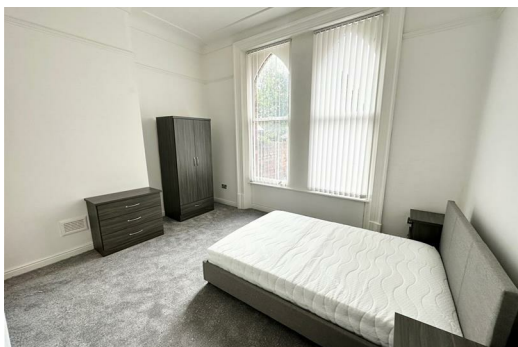
PVC Double glazed window,, radiator, carpet furnishings include Double bed and mattress, 2 x bedside cabinets, 1 x 3 drawer unit, 1 x 2 door wardrobe

Bathroom

Part tiled walls and laminate flooring three piece suite comprising of panelled bath with shower over, sink and low level w.c

Energy Efficiency Rating		
	Current	Potential
Very energy efficient - lower running costs		
(92 plus) A		
(81-91) B		
(69-80) C		
(55-68) D		
(39-54) E		
(21-38) F		
(1-20) G		
Not energy efficient - higher running costs		
England & Wales EU Directive 2002/91/EC		

Environmental Impact (CO ₂) Rating		
	Current	Potential
Very environmentally friendly - lower CO ₂ emissions		
(92 plus) A		
(81-91) B		
(69-80) C		
(55-68) D		
(39-54) E		
(21-38) F		
(1-20) G		
Not environmentally friendly - higher CO ₂ emissions		
England & Wales EU Directive 2002/91/EC		



Berkeley Shaw Estate Agents Limited.
Company No. 0784754

Berkeley Shaw Real Estate Limited.
Company No. 05206927

