



## Beetham Tower, 111 Old Hall Street, Liverpool, L3 9BD

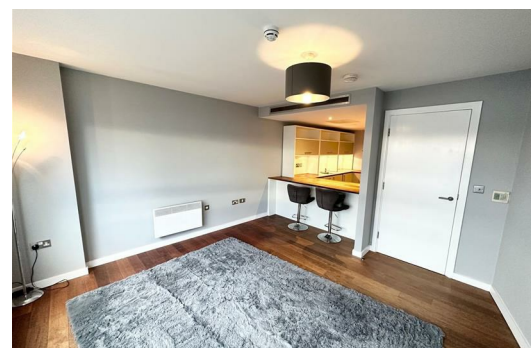
£895 PCM

Berkeley Shaw are please to offer this UNFURNISHED or FURNISHED ONE BEDROOM apartment TO LET situated on the 21st floor with exceptional views and a 24 hour on site concierge.

This property is located in the heart of the business district of the city, perfect for those who would prefer an easy commute to work.

Spacious accommodation is on offer, as the property comprises of; lounge and kitchen, One spacious bedrooms and a modern bathroom.  
Viewings are highly recommended!

Council Tax: Band: C  
Deposit: £895.00  
Tenancy Term: 12 months



## Hallway

Entrance Door, wooden floor

## Lounge

Double glazed windows, wooden floor, electric wall heater.

## Kitchen

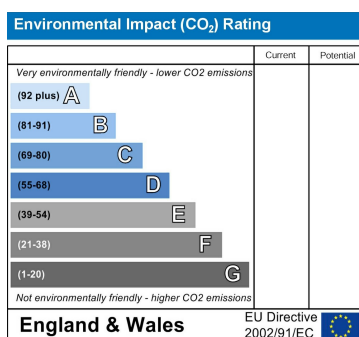
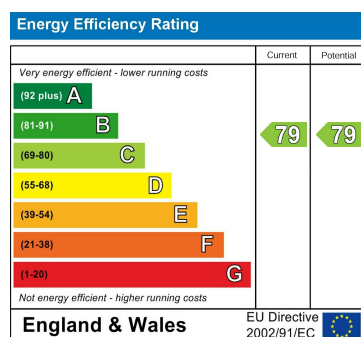
wooden floor, kitchen comprises of a range of fitted base and wall units, single drainer sink unit with mixer tap, integrated appliances include under counter fridge, under counter freezer, washer, dishwasher, electric oven and hob, extractor hood.

## Bedroom

Double glazed windows, carpet, electric wall heater, fitted wardrobes, chest of drawers, bedside cabinets

## Bathroom

Fully tiled floor and part tiled walls, bathroom comprises of panelled bath with shower over, low level w.c. and sink, ladder towel rail.



Berkeley Shaw Estate Agents Limited.  
Company No. 0784754

Berkeley Shaw Real Estate Limited.  
Company No. 05206927

