



47-51 Mersey View, Liverpool, L22 6AB

£995 PCM

Welcome to this charming apartment TO LET this UNFURNISHED 2/3 BEDROOM Apartment located in the picturesque area of Mersey View, Brighton-Le-Sands. This property boasts 2 reception rooms, providing ample space for entertaining guests or simply relaxing with your loved ones. With 2 cosy bedrooms, you'll have plenty of room to unwind after a long day.

The apartment features 1 shower room perfect for your daily routines. The layout is thoughtfully designed to maximise space and create a comfortable living environment. Whether you're a first-time renter, downsizing, the property is self contained

Situated in a desirable location, you'll enjoy the tranquillity of Mersey View while still being close to all the amenities that Brighton-Le-Sands has to offer. From charming cafes to scenic walks along the waterfront, this area has something for everyone.

Don't miss out on the chance to make this apartment your own and experience the best of Liverpool living. Contact us today to arrange a viewing and take the first step towards calling this lovely property your new home.

Deposit: £1050
Council Tax Bill: Unbanded (newbuild)
Minimum Term: 12 months



Rear Exterior

Communal Parking, access to self contained apartment

Internal Staircase

carpeted staircase to second floor apartment

Hallway

Entrance door, wood effect laminate flooring, electric wall heater

Lounge

Double glazed window, Laminate flooring, electric wall heater

Kitchen

Window, laminate flooring, kitchen comprises of a range of fitted base units, stainless steel sink with mixer tap, electric oven and hob, plumbing for washing machine

Bedroom 1

Double glazed window, carpet electric wall heater

Bedroom 2

Double glazed window, carpet electric wall heater

Study / Bedroom 3

Carpet electric, wall heater

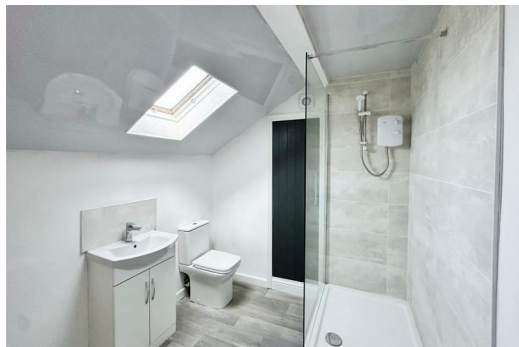
Shower Room

Window, part tiled walls, laminate flooring vanity sink with mixer tap, large walk-in shower low level w.c., walkin storage room

Energy Efficiency Rating		Environmental Impact (CO ₂) Rating				
	Current	Potential		Current	Potential	
<i>Very energy efficient - lower running costs</i>						
(92 plus) A				(92 plus) A		
(81-91) B				(81-91) B		
(69-80) C				(69-80) C		
(55-68) D				(55-68) D		
(39-54) E				(39-54) E		
(21-38) F				(21-38) F		
(1-20) G				(1-20) G		
<i>Not energy efficient - higher running costs</i>						
England & Wales		EU Directive 2002/91/EC		England & Wales		EU Directive 2002/91/EC

Energy Efficiency Rating: Current 47, Potential 75

Environmental Impact (CO₂) Rating: Current G, Potential A



Berkeley Shaw Estate Agents Limited.
Company No. 0784754

Berkeley Shaw Real Estate Limited.
Company No. 05206927

